

ARG80447 Human Dopamine ELISA Kit

Package: 96 wells
Store at: 4°C

Summary

Product Description	ARG80447 Human Dopamine ELISA Kit is an Enzyme Immunoassay kit for the quantification of Dopamine in plasma (EDTA) and urine.
Tested Reactivity	Hu
Tested Application	ELISA
Target Name	Dopamine
Conjugation	HRP
Sensitivity	2.5 ng/ml (urine); 1.9 pg/ml (plasma)
Sample Type	Plasma (EDTA) and urine.
Standard Range	10 - 2000 ng/ml
Sample Volume	10 µl urine; 300 µl plasma

Application Instructions

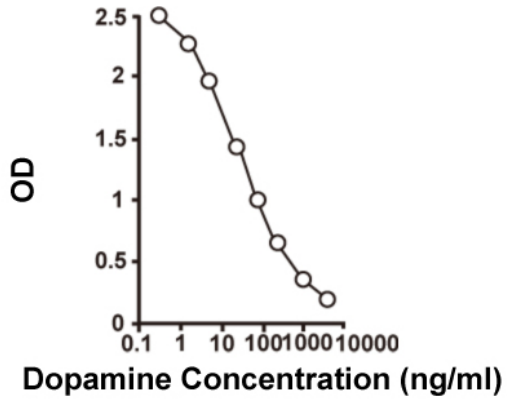
Assay Time	30 min , 2 h, 30, 25 min (RT/shaker)
------------	--------------------------------------

Properties

Form	96 well
Storage instruction	Store the kit at 2-8°C. Keep microplate wells sealed in a dry bag with desiccants. Do not expose test reagents to heat, sun or strong light during storage and usage. Please refer to the product user manual for detail temperatures of the components.
Note	For laboratory research only, not for drug, diagnostic or other use.

Bioinformation

Highlight	Related products: Dopamine antibodies ; Dopamine ELISA Kits ; Dopamine Duos / Panels ; Related news: Astrocyte-to-neuron conversion for Parkinson's disease treatment New ELISA data calculation tool: Simplify the ELISA analysis by GainData
Research Area	Neuroscience kit



ARG80447 Human Dopamine ELISA Kit standard curve example image

The representative standard curve of ARG80447 Human Dopamine ELISA Kit. The standard curve is for demonstration only and cannot be used in place of data generations at the time of assay. The standard curve should be generated each time the assay is performed.