

ARG80450 Dopamine ELISA Kit

Package: 96 wells
Store at: 4°C

Summary

Product Description	ARG80450 Dopamine ELISA Kit is an Enzyme Immunoassay kit for the quantification of Human/Mouse/Rat Dopamine in various biological sample types (e.g. EDTA-plasma and cell culture supernatants).
Tested Reactivity	Hu, Ms, Rat
Tested Application	ELISA
Target Name	Dopamine
Conjugation	HRP
Sensitivity	0.25 ng/ml
Sample Type	Various biological sample types (e.g. EDTA-plasma and cell culture supernatants).
Standard Range	0.5 - 80 ng/ml
Sample Volume	1-750 µl

Application Instructions

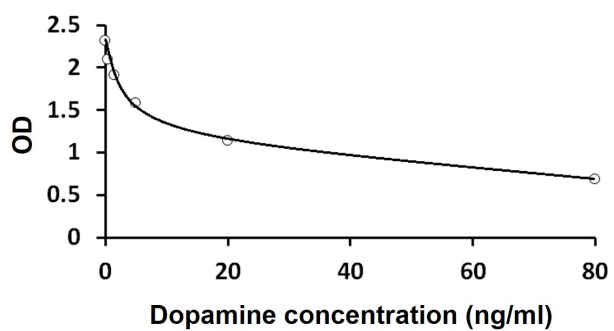
Assay Time	1 min (RT/shaker) 15-20 h (2-8°), 30, 20 min (RT/shaker)
------------	--

Properties

Form	96 well
Storage instruction	Store the kit at 2-8°C. Keep microplate wells sealed in a dry bag with desiccants. Do not expose test reagents to heat, sun or strong light during storage and usage. Please refer to the product user manual for detail temperatures of the components.
Note	For laboratory research only, not for drug, diagnostic or other use.

Bioinformation

Highlight	Related products: Dopamine antibodies: Dopamine ELISA Kits: Dopamine Duos / Panels: Related news: Astrocyte-to-neuron conversion for Parkinson's disease treatment New ELISA data calculation tool: Simplify the ELISA analysis by GainData
Research Area	Neuroscience kit



ARG80450 Dopamine ELISA Kit standard curve image

ARG80450 Dopamine ELISA Kit results of a typical standard run with optical density reading at 450 nm.