

## ARG80491 Human IGF1 ELISA Kit

Package: 96 wells  
Store at: 4°C

### Summary

Product Description	ARG80491 Human IGF1 ELISA Kit is an Enzyme Immunoassay kit for the quantification of Human Insulin-like Growth Factor 1 (IGF1) in serum.
Tested Reactivity	Hu
Tested Application	ELISA
Target Name	IGF1
Conjugation	HRP
Sensitivity	9.75 ng/ml
Sample Type	Serum.
Standard Range	10 - 600 ng/ml
Sample Volume	50 µl
Alternate Names	MGF; Insulin-like growth factor I; Mechano growth factor; Somatomedin-C; IGFI; IGF-I

### Application Instructions

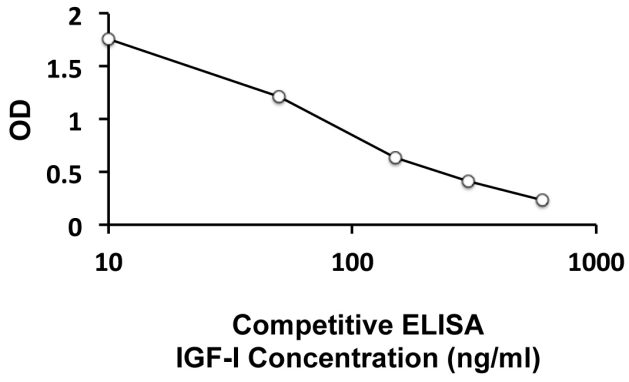
Assay Time	2 h, 1 h, 30 min (RT)
------------	-----------------------

### Properties

Form	96 well
Storage instruction	Store the kit at 2-8°C. Keep microplate wells sealed in a dry bag with desiccants. Do not expose test reagents to heat, sun or strong light during storage and usage. Please refer to the product user manual for detail temperatures of the components.
Note	For laboratory research only, not for drug, diagnostic or other use.

### Bioinformation

Database links	<a href="#">GeneID: 3479 Human</a> <a href="#">Swiss-port # P05019 Human</a>
Gene Symbol	IGF1
Gene Full Name	insulin-like growth factor 1 (somatomedin C)
Highlight	Related products: <a href="#">IGF1 antibodies</a> ; <a href="#">IGF1 ELISA Kits</a> ; <a href="#">IGF1 Duos / Panels</a> ; <a href="#">IGF1 recombinant proteins</a> ; New ELISA data calculation tool: <a href="#">Simplify the ELISA analysis by GainData</a>
Research Area	Cancer kit; Developmental Biology kit; Signaling Transduction kit



ARG80491 Human IGF1 ELISA Kit standard curve example image

The representative standard curve of ARG80491 Human IGF1 ELISA Kit. The standard curve is for demonstration only and cannot be used in place of data generations at the time of assay. The standard curve should be generated each time the assay is performed.