

## ARG80869 Human Calprotectin ELISA Kit

Package: 96 wells  
Store at: 4°C

### Summary

Product Description	ARG80869 Human Calprotectin ELISA Kit is an Enzyme Immunoassay kit for the quantification of Human Calprotectin (S100A8/S100A9 complex, a neutrophil cytoplasmic protein) in stool.
Tested Reactivity	Hu
Tested Application	ELISA
Target Name	Calprotectin
Conjugation	HRP
Conjugation Note	TMB at 450 nm or 620 nm.
Sensitivity	5 ng/ml
Sample Type	Stool.
Standard Range	69.5 - 892 ng/ml (low) 156 - 5560 ng/ml (high)
Sample Volume	50 µl
Precision	Intra-Assay CV: 4.5% Inter-Assay CV: 5.3%
Alternate Names	MA387; Leukocyte L1 complex light chain; 60B8AG; CFAG; p8; Urinary stone protein band A; P8; Calprotectin L1L subunit; NIF; S100 calcium-binding protein A8; MIF; MRP8; Calgranulin-A; Protein S100-A8; Migration inhibitory factor-related protein 8; CGLA; CAGA; L1Ag; Cystic fibrosis antigen; CP-10; MRP-8; Calgranulin-B; MRP-14; MRP14; 60B8AG; CFAG; MAC387; Calprotectin L1H subunit; NIF; MIF; p14; LIAG; Protein S100-A9; CGLB; Migration inhibitory factor-related protein 14; L1AG; Leukocyte L1 complex heavy chain; P14; CAGB; S100 calcium-binding protein A9

### Properties

Form	96 well
Storage instruction	Store the kit at 2-8°C. Keep microplate wells sealed in a dry bag with desiccants. Do not expose test reagents to heat, sun or strong light during storage and usage. Please refer to the product user manual for detail temperatures of the components.
Note	For laboratory research only, not for drug, diagnostic or other use.

### Bioinformation

Database links	<a href="#">GeneID: 6279 Human</a> <a href="#">Swiss-port # P05109 Human</a>
Gene Symbol	S100A8; S100A9
Gene Full Name	S100 calcium binding protein A8; S100 calcium binding protein A9
Background	Calprotectin is a 24 kDa dimer of calcium binding proteins S100A8 and S100A9. The complex accounts for up to 60% of the soluble protein content of the neutrophil cytosol. In vitro studies show that calprotectin has bacteriostatic and fungistatic properties, that arise from its ability to sequester

manganese and zinc. Calprotectin has two transition metal binding sites that form at the interface of the S100A8 and S100A9 monomers, and metal sequestration by calprotectin has been shown to be calcium dependent. The complex is resistant to enzymatic degradation, and can be easily measured in faeces. [wikipedia]

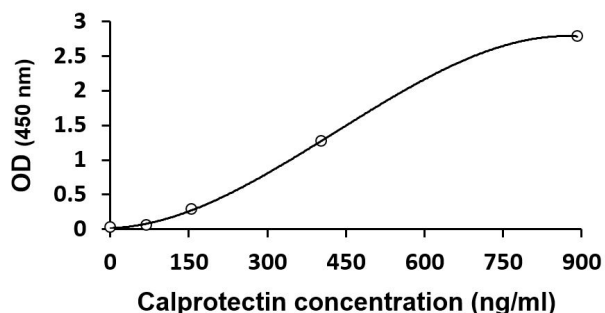
**Function** Calprotectin is a stool (fecal) test that is used to detect inflammation in the intestines. Intestinal inflammation is associated with, for example, some bacterial infections and, in people with inflammatory bowel disease (IBD), it is associated with disease activity and severity. The calprotectin test is not diagnostic but may be used to distinguish between IBD and non-inflammatory disorders and to monitor the severity of IBD. [labtestsonline]

**Highlight** Related products:  
[Calprotectin antibodies](#); [Calprotectin ELISA Kits](#);  
New ELISA data calculation tool:  
[Simplify the ELISA analysis by GainData](#)

**Research Area** Cell Biology and Cellular Response kit; Gene Regulation kit; Immune System kit

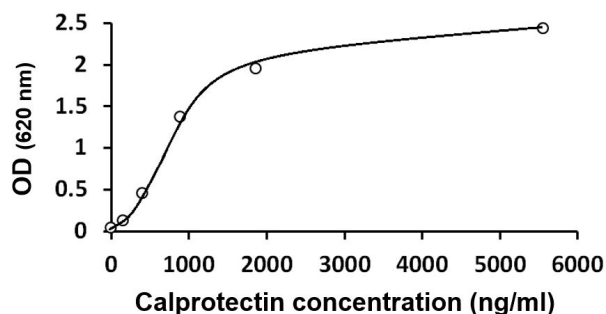
**Cellular Localization** Secreted. Cytoplasm. Cytoplasm, cytoskeleton. Cell membrane; Peripheral membrane protein. Note=Predominantly localized in the cytoplasm. Upon elevation of the intracellular calcium level, translocated from the cytoplasm to the cytoskeleton and the cell membrane. Upon neutrophil activation or endothelial adhesion of monocytes, is secreted via a microtubule-mediated, alternative pathway. [UniProt]

## Images



ARG80869 Human Calprotectin ELISA Kit standard curve image

ARG80869 Human Calprotectin ELISA Kit results of a typical standard run with optical density reading at 450 nm.



ARG80869 Human Calprotectin ELISA Kit standard curve image

ARG80869 Human Calprotectin ELISA Kit results of a typical standard run with optical density reading at 620 nm.