

ARG80971 Human BMP15 ELISA Kit

Package: 96 wells
Store at: 4°C

Component

Cat. No.	Component Name	Package	Temp
ARG80971-001	Antibody-coated microplate	96 wells	4°C
ARG80971-002	Standards A-F (Concentration: 62.5, 125, 250, 500, 1000, 2000 pg/ml)	6 vials X 0.5ml	4°C
ARG80971-003	Sample Diluent	6 ml	4°C
ARG80971-004	HRP-conjugated Antibody	10 ml	4°C
ARG80971-005	20X Wash buffer	25 ml	4°C
ARG80971-006	Chromogen solution A	6 ml	4°C (Protect from light)
ARG80971-007	Chromogen solution B	6 ml	4°C (Protect from light)
ARG80971-008	Plate sealer	2	RT
ARG80971-009	STOP solution	6 ml	4°C

Summary

Product Description	ARG80971 Human BMP15 ELISA Kit is an Enzyme Immunoassay kit for the quantification of Human BMP15 in cell culture supernatant, serum, plasma and other suitable sample solution.
Tested Reactivity	Hu
Tested Application	ELISA
Target Name	BMP15
Conjugation	HRP
Sensitivity	10 pg/ml
Sample Type	Cell culture supernatant, serum, plasma and other suitable sample solution.
Standard Range	62.5 - 2000 pg/ml
Sample Volume	50 µl
Alternate Names	BMP15; Bone Morphogenetic Protein 15; GDF9B; Growth/Differentiation Factor 9B; BMP-15; GDF-9B; ODG2; POF4

Application Instructions

Assay Time	90 min
------------	--------

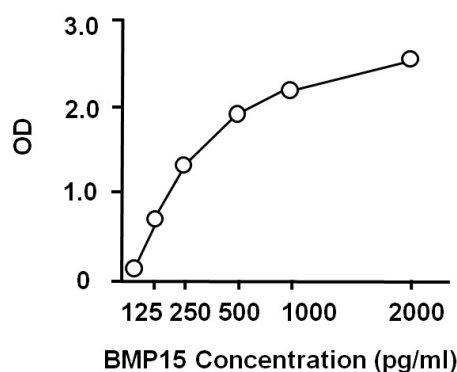
Properties

Form	96 well
Storage instruction	Store the kit at 2-8°C. Keep microplate wells sealed in a dry bag with desiccants. Do not expose test reagents to heat, sun or strong light during storage and usage. Please refer to the product user manual for detail temperatures of the components.
Note	For laboratory research only, not for drug, diagnostic or other use.

Bioinformation

Database links	GeneID: 9210 Human Swiss-port # O95972 Human
Gene Symbol	BMP15
Gene Full Name	Bone Morphogenetic Protein 15
Background	This gene encodes a secreted ligand of the TGF-beta (transforming growth factor-beta) superfamily of proteins. Ligands of this family bind various TGF-beta receptors leading to recruitment and activation of SMAD family transcription factors that regulate gene expression. The encoded preproprotein is proteolytically processed to generate subunits of a disulfide-linked homodimer, or alternatively, a heterodimer, with the related protein, growth differentiation factor 9 (GDF9). This protein plays a role in oocyte maturation and follicular development, through activation of granulosa cells. Defects in this gene are the cause of ovarian dysgenesis and are associated with premature ovarian failure. [provided by RefSeq, Aug 2016]
Function	May be involved in follicular development. Oocyte-specific growth/differentiation factor that stimulates folliculogenesis and granulosa cell (GC) growth. [UniProt]
Highlight	Related products: BMP antibodies ; BMP ELISA Kits ; BMP recombinant proteins ; New ELISA data calculation tool: Simplify the ELISA analysis by GainData
Research Area	Cell Biology and Cellular Response kit; Developmental Biology kit; Signaling Transduction kit
PTM	Secreted. [UniProt]
Cellular Localization	Secreted. [UniProt]

Images



ARG80971 Human BMP15 ELISA Kit standard curve image

ARG80971 Human BMP15 ELISA Kit results of a typical standard run with optical density reading at 450 nm.