

ARG81125 Bovine Serum Albumin (High sensitive) ELISA Kit

Package: 96 wells

Store at: 4°C

Component

Cat. No.	Component Name	Package	Temp
ARG81125-001	Antibody-coated microplate	12 strips x 8 wells	4°C
ARG81125-002	10X Wash buffer	50 ml	4°C
ARG81125-003	Sample Diluent	70 ml	4°C
ARG81125-004	Standard 1-7	1 ml X 7 vials (Ready-to-use)	4°C
ARG81125-005	Control	1 ml (25 ng/ml)	4°C
ARG81125-006	HRP-conjugate	15 ml (Ready-to-use)	4°C
ARG81125-007	TMB substrate	15 ml (Ready-to-use)	4°C (Protect from light)
ARG81125-008	STOP solution	15 ml (Ready-to-use)	4°C

Summary

Product Description	ARG81125 Bovine Serum Albumin (High sensitive) ELISA Kit is a high sensitive Enzyme Immunoassay kit for the quantification of Bovine Serum Albumin in biological fluids.
Tested Reactivity	Bov
Tested Application	ELISA
Specificity	ARG81125 Bovine Serum Albumin (High sensitive) ELISA Kit reacts to Bovine Serum Albumin, and 3ng/ml –200ng/ml of Human serum albumin, Ovalbumin, Mouse albumin and rabbit albumin have been tested with the kit and no significant cross-reactivity was observed.
Target Name	Albumin
Conjugation	HRP
Conjugation Note	Substrate: TMB and read at 450 nm
Sensitivity	0.5 ng/ml
Sample Type	Biological fluids
Standard Range	2.5 - 50 ng/ml
Sample Volume	100 µl
Alternate Names	allergen Bos d 6; Serum albumin; BSA; FDAH; ANALBA

Application Instructions

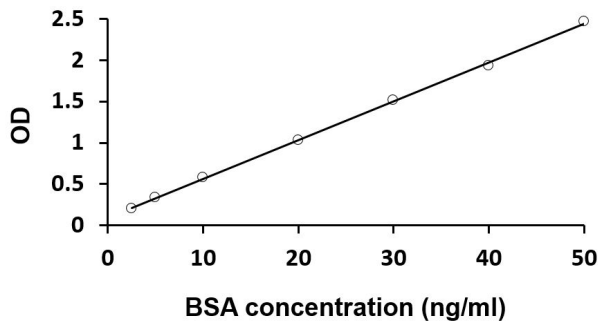
Assay Time	~2 hours
------------	----------

Properties

Form	96 well
Storage instruction	Store the kit at 2-8°C. Keep microplate wells sealed in a dry bag with desiccants. Do not expose test reagents to heat, sun or strong light during storage and usage. Please refer to the product user manual for detail temperatures of the components.
Note	For laboratory research only, not for drug, diagnostic or other use.

Bioinformation

Database links	GeneID: 280717 Bovine Swiss-port # P02769 Bovine
Gene Symbol	ALB
Gene Full Name	albumin
Background	Albumin is a soluble, monomeric protein which comprises about one-half of the blood serum protein. Albumin functions primarily as a carrier protein for steroids, fatty acids, and thyroid hormones and plays a role in stabilizing extracellular fluid volume. Albumin is a globular unglycosylated serum protein of molecular weight 65,000. Albumin is synthesized in the liver as prealbumin which has an N-terminal peptide that is removed before the nascent protein is released from the rough endoplasmic reticulum. The product, prealbumin, is in turn cleaved in the Golgi vesicles to produce the secreted albumin. [provided by RefSeq, Jul 2008]
Function	Serum albumin, the main protein of plasma, has a good binding capacity for water, Ca(2+), Na(+), K(+), fatty acids, hormones, bilirubin and drugs. Its main function is the regulation of the colloidal osmotic pressure of blood. Major zinc transporter in plasma, typically binds about 80% of all plasma zinc. [UniProt]
Highlight	Related products: Albumin antibodies Albumin ELISA Kits Related news: Quality control for engineered T cell therapy Quantifying BSA levels in cell therapy products or urine New ELISA data calculation tool: Simplify the ELISA analysis by GainData
PTM	Kenitra variant is partially O-glycosylated at Thr-620. It has two new disulfide bonds Cys-600 to Cys-602 and Cys-601 to Cys-606. Glycated in diabetic patients. Phosphorylated by FAM20C in the extracellular medium. Acetylated on Lys-223 by acetylsalicylic acid.



ARG81125 Bovine Serum Albumin (High sensitive) ELISA Kit standard curve image

ARG81125 Bovine Serum Albumin (High sensitive) ELISA Kit results of a typical standard run with optical density reading at 450 nm.