

ARG81175 Chicken IgG ELISA Kit

Package: 96 wells
Store at: 4°C

Summary

Product Description	ARG81175 Chicken IgG ELISA Kit is an Enzyme Immunoassay kit for the quantification of Chicken IgG in serum, plasma and cell culture supernatants.
Tested Reactivity	Chk
Tested Application	ELISA
Target Name	IgG
Conjugation	HRP
Conjugation Note	Substrate: TMB and read at 450 nm
Sensitivity	3.12 ng/ml
Sample Type	Serum, plasma and cell culture supernatants.
Standard Range	3.12 - 200 ng/ml
Sample Volume	100 µl
Alternate Names	Immunoglobulin G

Application Instructions

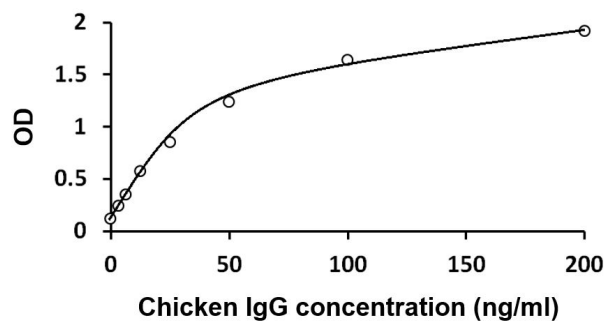
Assay Time	3 hours
------------	---------

Properties

Form	96 well
Storage instruction	Store the kit at 2-8°C. Keep microplate wells sealed in a dry bag with desiccants. Do not expose test reagents to heat, sun or strong light during storage and usage. Please refer to the product user manual for detail temperatures of the components.
Note	For laboratory research only, not for drug, diagnostic or other use.

Bioinformation

Highlight	Related products: IgG antibodies ; IgG ELISA Kits ; IgG Duos / Panels ; IgG recombinant proteins ; New ELISA data calculation tool: Simplify the ELISA analysis by GainData
-----------	--



ARG81175 Chicken IgG ELISA Kit standard curve image

ARG81175 Chicken IgG ELISA Kit results of a typical standard run with optical density reading at 450 nm.