

ARG81231 N-epsilon-carboxymethyl lysine (CML) ELISA Kit

Package: 96 wells
Store at: 4°C, -20°C

Summary

Product Description	ARG81231 N-epsilon-carboxymethyl lysine (CML) ELISA Kit is an Enzyme Immunoassay kit for the quantification of N-epsilon-carboxymethyl lysine (CML) in purified protein, plasma, serum, cell lysate.
Tested Reactivity	Other
Tested Application	ELISA
Target Name	N-epsilon-carboxymethyl lysine (CML)
Conjugation	HRP
Conjugation Note	Read at 450 nm.
Sensitivity	50 ng/ml
Sample Type	Purified protein, plasma, serum, cell lysate
Standard Range	0.05 - 12.5 µg/ml
Sample Volume	50 µl

Application Instructions

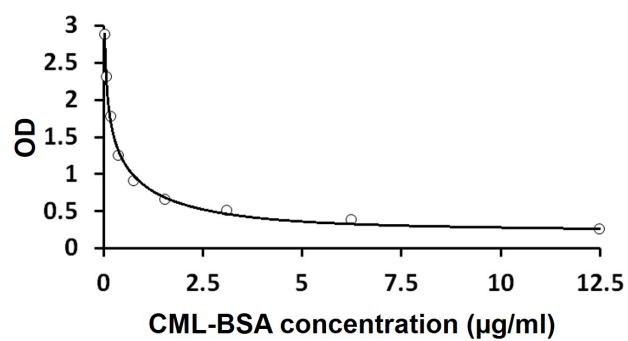
Assay Time	2.5 hours
------------	-----------

Properties

Form	96 well
Storage instruction	Store components at 4°C or -20°C. Keep microplate wells sealed in a dry bag with desiccants. Do not expose test reagents to heat, sun or strong light during storage and usage. Please refer to the product user manual for detail temperatures of the components.
Note	For laboratory research only, not for drug, diagnostic or other use.

Bioinformation

Highlight	Related products: Lysine antibodies ; Lysine ELISA Kits ; Lysine Duos / Panels ; New ELISA data calculation tool: Simplify the ELISA analysis by GainData
-----------	------------------------------------------------------------------------------------------------------------------------------------------------------------------------------------------------------------------------------------



ARG81231 N-epsilon-carboxymethyl lysine (CML) ELISA Kit standard curve image

ARG81231 N-epsilon-carboxymethyl lysine (CML) ELISA Kit results of a typical standard run with optical density reading at 450 nm.