

## ARG81335 Mouse CD138 / Syndecan-1 ELISA Kit

Package: 96 wells  
Store at: 4°C

### Summary

Product Description	ARG81335 Mouse CD138 / Syndecan-1 ELISA Kit is an Enzyme Immunoassay kit for the quantification of Mouse CD138 / Syndecan-1 in serum, plasma and cell culture supernatant.
Tested Reactivity	Ms
Tested Application	ELISA
Specificity	Recognizes recombinant and natural Mouse soluble CD138 / Syndecan-1. No cross reactivity with other molecules.
Target Name	CD138 / Syndecan 1
Conjugation	HRP
Conjugation Note	Substrate: TMB and read at 450 nm.
Sensitivity	0.35 ng/ml
Sample Type	Serum, plasma and cell culture supernatants.
Standard Range	0.5 - 16 ng/ml
Sample Volume	100 µl (cell culture supernatants); 50 µl (serum and plasma)
Alternate Names	CD antigen CD138; syndecan; CD138; SDC; Syndecan-1; SYND1

### Application Instructions

Assay Time ~ 3 hours

### Properties

Form	96 well
Storage instruction	Store the kit at 2-8°C. Keep microplate wells sealed in a dry bag with desiccants. Do not expose test reagents to heat, sun or strong light during storage and usage. Please refer to the product user manual for detail temperatures of the components.
Note	For laboratory research only, not for drug, diagnostic or other use.

### Bioinformation

Gene Symbol	SDC1
Gene Full Name	syndecan 1
Background	The protein encoded by this gene is a transmembrane (type I) heparan sulfate proteoglycan and is a member of the syndecan proteoglycan family. The syndecans mediate cell binding, cell signaling, and cytoskeletal organization and syndecan receptors are required for internalization of the HIV-1 tat protein. The syndecan-1 protein functions as an integral membrane protein and participates in cell proliferation, cell migration and cell-matrix interactions via its receptor for extracellular matrix proteins. Altered syndecan-1 expression has been detected in several different tumor types. While several transcript variants may exist for this gene, the full-length nature of only two have been described to

date. These two represent the major variants of this gene and encode the same protein. [provided by RefSeq, Jul 2008]

Function

Cell surface proteoglycan that bears both heparan sulfate and chondroitin sulfate and that links the cytoskeleton to the interstitial matrix. [UniProt]

Highlight

Related products:

[CD138 antibodies](#); [CD138 ELISA Kits](#);

Related news:

[Detecting MMPs and their non-ECM substrates](#)

New ELISA data calculation tool:

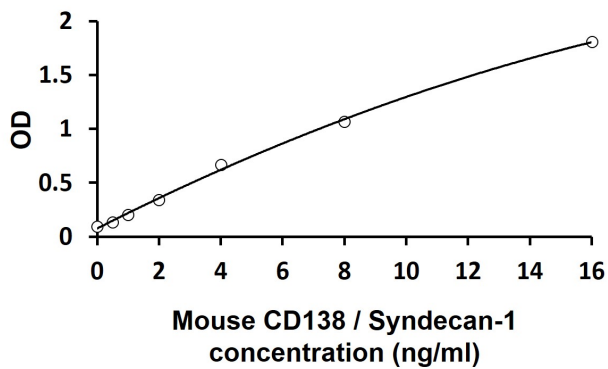
[Simplify the ELISA analysis by GainData](#)

PTM

Shedding is enhanced by a number of factors such as heparanase, thrombin or EGF. Also by stress and wound healing. PMA-mediated shedding is inhibited by TIMP3. [UniProt]

## Images

---



ARG81335 Mouse CD138 / Syndecan-1 ELISA Kit standard curve image

ARG81335 Mouse CD138 / Syndecan-1 ELISA Kit results of a typical standard run with optical density reading at 450 nm.

---