

ARG81533 Human Midkine ELISA Kit

Package: 96 wells
Store at: 4°C

Component

Cat. No.	Component Name	Package	Temp
ARG81533-001	Antibody-coated microplate	8 X 12 strips	4°C. Unused strips should be sealed tightly in the air-tight pouch.
ARG81533-002	Standard	2 X 10 ng/vial	4°C
ARG81533-003	Standard/Sample diluent	30 ml (Ready to use)	4°C
ARG81533-004	Antibody conjugate concentrate (100X)	1 vial (100 µl)	4°C
ARG81533-005	Antibody diluent buffer	12 ml (Ready to use)	4°C
ARG81533-006	HRP-Streptavidin concentrate (100X)	1 vial (100 µl)	4°C
ARG81533-007	HRP-Streptavidin diluent buffer	12 ml (Ready to use)	4°C
ARG81533-008	25X Wash buffer	20 ml	4°C
ARG81533-009	TMB substrate	10 ml (Ready to use)	4°C (Protect from light)
ARG81533-010	STOP solution	10 ml (Ready to use)	4°C
ARG81533-011	Plate sealer	4 strips	Room temperature

Summary

Product Description	ARG81533 Human Midkine ELISA Kit is an Enzyme Immunoassay kit for the quantification of Human Midkine in serum, plasma (heparin, EDTA) and cell culture supernatants.
Tested Reactivity	Hu
Tested Application	ELISA
Specificity	There is no detectable cross-reactivity with other relevant proteins.
Target Name	Midkine
Conjugation	HRP
Conjugation Note	Substrate: TMB and read at 450 nm.
Sensitivity	39 pg/ml
Sample Type	Serum, plasma (heparin, EDTA) and cell culture supernatants.
Standard Range	78 - 5000 pg/ml
Sample Volume	100 µl

Precision	Intra-Assay CV: 5.4% Inter-Assay CV: 6.2%
Alternate Names	ARAP; Neurite outgrowth-promoting protein; Midkine; MK; Neurite outgrowth-promoting factor 2; Amphiregulin-associated protein; Midgestation and kidney protein; NRGF2

Application Instructions

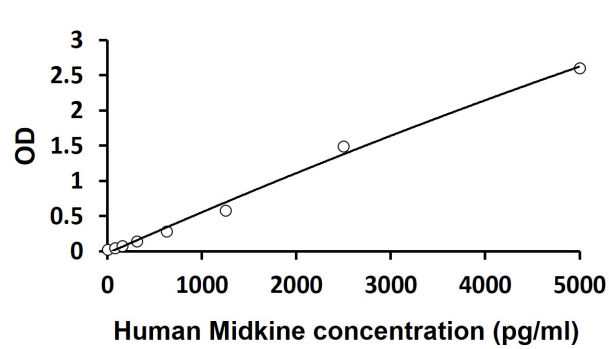
Assay Time	~ 5 hours
------------	-----------

Properties

Form	96 well
Storage instruction	Store the kit at 2-8°C. Keep microplate wells sealed in a dry bag with desiccants. Do not expose test reagents to heat, sun or strong light during storage and usage. Please refer to the product user manual for detail temperatures of the components.
Note	For laboratory research only, not for drug, diagnostic or other use.

Bioinformation

Gene Symbol	MDK
Gene Full Name	midkine (neurite growth-promoting factor 2)
Background	This gene encodes a member of a small family of secreted growth factors that binds heparin and responds to retinoic acid. The encoded protein promotes cell growth, migration, and angiogenesis, in particular during tumorigenesis. This gene has been targeted as a therapeutic for a variety of different disorders. Alternatively spliced transcript variants encoding multiple isoforms have been observed. [provided by RefSeq, Jul 2012]
Function	Developmentally regulated, secreted growth factor homologous to pleiotrophin (PTN), which has heparin binding activity. Binds anaplastic lymphoma kinase (ALK) which induces ALK activation and subsequent phosphorylation of the insulin receptor substrate (IRS1), followed by the activation of mitogen-activated protein kinase (MAPK) and PI3-kinase, and the induction of cell proliferation. Involved in neointima formation after arterial injury, possibly by mediating leukocyte recruitment. Also involved in early fetal adrenal gland development (By similarity). [UniProt]
Highlight	Related products: Midkine antibodies ; Midkine ELISA Kits ; New ELISA data calculation tool: Simplify the ELISA analysis by GainData



ARG81533 Human Midkine ELISA Kit standard curve image

ARG81533 Human Midkine ELISA Kit results of a typical standard run with optical density reading at 450 nm.