

ARG81634 Rat BMP2 ELISA Kit

Package: 96 wells
Store at: 4°C

Component

Cat. No.	Component Name	Package	Temp
ARG81634-001	Antibody-coated microplate	8 X 12 strips	4°C. Unused strips should be sealed tightly in the air-tight pouch.
ARG81634-002	Standard	2 X 10 ng/vial	4°C
ARG81634-003	Standard/Sample diluent	30 ml (Ready to use)	4°C
ARG81634-004	Antibody conjugate concentrate (100X)	1 vial (100 µl)	4°C
ARG81634-005	Antibody diluent buffer	12 ml (Ready to use)	4°C
ARG81634-006	HRP-Streptavidin concentrate (100X)	1 vial (100 µl)	4°C
ARG81634-007	HRP-Streptavidin diluent buffer	12 ml (Ready to use)	4°C
ARG81634-008	25X Wash buffer	20 ml	4°C
ARG81634-009	TMB substrate	10 ml (Ready to use)	4°C (Protect from light)
ARG81634-010	STOP solution	10 ml (Ready to use)	4°C
ARG81634-011	Plate sealer	4 strips	Room temperature

Summary

Product Description	ARG81634 Rat BMP2 ELISA Kit is an Enzyme Immunoassay kit for the quantification of Rat BMP2 in serum and cell culture supernatants.
Tested Reactivity	Rat
Tested Application	ELISA
Specificity	There is no detectable cross-reactivity with other relevant proteins.
Target Name	BMP2
Conjugation	HRP
Conjugation Note	Substrate: TMB and read at 450 nm.
Sensitivity	15.6 pg/ml
Sample Type	Serum and cell culture supernatants.
Standard Range	31.2 - 2000 pg/ml
Sample Volume	100 µl

Precision	Intra-Assay CV: 5.9%; Inter-Assay CV: 7.3%
Alternate Names	BDA2; BMP2A; BMP-2; Bone morphogenetic protein 2A; Bone morphogenetic protein 2; BMP-2A

Application Instructions

Assay Time	~ 5 hours
------------	-----------

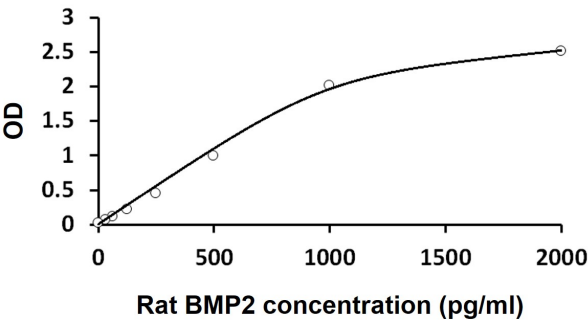
Properties

Form	96 well
Storage instruction	Store the kit at 2-8°C. Keep microplate wells sealed in a dry bag with desiccants. Do not expose test reagents to heat, sun or strong light during storage and usage. Please refer to the product user manual for detail temperatures of the components.
Note	For laboratory research only, not for drug, diagnostic or other use.

Bioinformation

Gene Symbol	BMP2
Gene Full Name	bone morphogenetic protein 2
Background	The protein encoded by this gene belongs to the transforming growth factor-beta (TGFB) superfamily. The encoded protein acts as a disulfide-linked homodimer and induces bone and cartilage formation. [provided by RefSeq, Jul 2008]
Function	Induces cartilage and bone formation. [UniProt]
Highlight	Related products: BMP antibodies ; BMP ELISA Kits ; BMP recombinant proteins ; New ELISA data calculation tool: Simplify the ELISA analysis by GainData

Images



ARG81634 Rat BMP2 ELISA Kit standard curve image

ARG81634 Rat BMP2 ELISA Kit results of a typical standard run with optical density reading at 450 nm.