

ARG82381 Mouse Semaphorin 3F ELISA Kit

Package: 96 wells
Store at: 4°C

Component

Cat. No.	Component Name	Package	Temp
ARG82381-001	Antibody-coated microplate	8 X 12 strips	4°C. Unused strips should be sealed tightly in the air-tight pouch.
ARG82381-002	Standard	2 X 10 ng/vial	4°C
ARG82381-003	Standard/Sample diluent	30 ml (Ready to use)	4°C
ARG82381-004	Antibody conjugate concentrate (100X)	1 vial (100 µl)	4°C
ARG82381-005	Antibody diluent buffer	12 ml (Ready to use)	4°C
ARG82381-006	HRP-Streptavidin concentrate (100X)	1 vial (100 µl)	4°C
ARG82381-007	HRP-Streptavidin diluent buffer	12 ml (Ready to use)	4°C
ARG82381-008	25X Wash buffer	20 ml	4°C
ARG82381-009	TMB substrate	10 ml (Ready to use)	4°C (Protect from light)
ARG82381-010	STOP solution	10 ml (Ready to use)	4°C
ARG82381-011	Plate sealer	4 strips	Room temperature

Summary

Product Description	ARG82381 Mouse Semaphorin 3F ELISA Kit is an Enzyme Immunoassay kit for the quantification of Mouse Semaphorin 3F in serum, plasma (EDTA, heparin, citrate) and cell culture supernatants.
Tested Reactivity	Ms
Tested Application	ELISA
Target Name	Semaphorin 3F
Conjugation	HRP
Conjugation Note	Substrate: TMB and read at 450 nm.
Sensitivity	15.6 pg/ml
Sample Type	Serum, plasma (EDTA, heparin, citrate) and cell culture supernatants.
Standard Range	31.2 - 2000 pg/ml
Sample Volume	100 µl
Precision	Intra-Assay CV: 5.5% Inter-Assay CV: 6.6%

Alternate Names	Sema III/F; SEMA-IV; Semaphorin IV; SEMA4; SEMAK; Sema IV; Semaphorin-3F
-----------------	--

Application Instructions

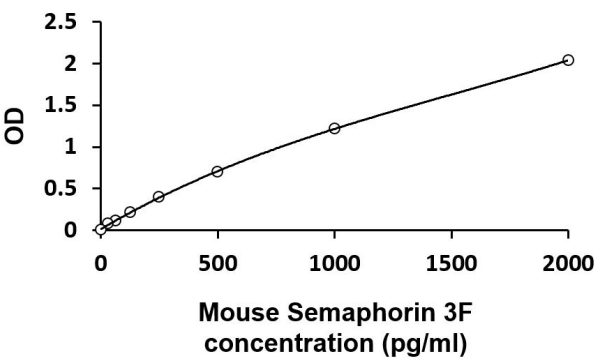
Assay Time	~ 5 hours
------------	-----------

Properties

Form	96 well
Storage instruction	Store the kit at 2-8°C. Keep microplate wells sealed in a dry bag with desiccants. Do not expose test reagents to heat, sun or strong light during storage and usage. Please refer to the product user manual for detail temperatures of the components.
Note	For laboratory research only, not for drug, diagnostic or other use.

Bioinformation

Gene Symbol	SEMA3F
Gene Full Name	sema domain, immunoglobulin domain (Ig), short basic domain, secreted, (semaphorin) 3F
Background	<p>The semaphorins are a family of proteins that are involved in signaling. All the family members have a secretion signal, a 500-amino acid sema domain, and 16 conserved cysteine residues (Kolodkin et al., 1993 [PubMed 8269517]). Sequence comparisons have grouped the secreted semaphorins into 3 general classes, all of which also have an immunoglobulin domain. The semaphorin III family, consisting of human semaphorin III (SEMA3A; MIM 603961), chicken collapsin, and mouse semaphorins A, D, and E, all have a basic domain at the C terminus. Chicken collapsin contributes to path finding by axons during development by inhibiting extension of growth cones (Luo et al., 1993 [PubMed 8402908]) through an interaction with a collapsin response mediator protein of relative molecular mass 62K (CRMP62) (Goshima et al., 1995 [PubMed 7637782]), a putative homolog of an axonal guidance associated UNC33 gene product (MIM 601168). SEMA3F is a secreted member of the semaphorin III family.[supplied by OMIM, Mar 2008]</p>
Function	May play a role in cell motility and cell adhesion. [UniProt]
Highlight	<p>Related products: Semaphorin antibodies; Semaphorin ELISA Kits; New ELISA data calculation tool: Simplify the ELISA analysis by GainData</p>
Cellular Localization	Secreted. [UniProt]



ARG82381 Mouse Semaphorin 3F ELISA Kit standard curve image

ARG82381 Mouse Semaphorin 3F ELISA Kit results of a typical standard run with optical density reading at 450 nm.