

## ARG82410 Mouse SERPINE2 ELISA Kit

Package: 96 wells  
Store at: 4°C

### Component

Cat. No.	Component Name	Package	Temp
ARG82410-001	Antibody-coated microplate	8 X 12 strips	4°C. Unused strips should be sealed tightly in the air-tight pouch.
ARG82410-002	Standard	2 X 50 ng/vial	4°C
ARG82410-003	Standard/Sample diluent	30 ml (Ready to use)	4°C
ARG82410-004	Antibody conjugate concentrate (100X)	1 vial (100 µl)	4°C
ARG82410-005	Antibody diluent buffer	12 ml (Ready to use)	4°C
ARG82410-006	HRP-Streptavidin concentrate (100X)	1 vial (100 µl)	4°C
ARG82410-007	HRP-Streptavidin diluent buffer	12 ml (Ready to use)	4°C
ARG82410-008	25X Wash buffer	20 ml	4°C
ARG82410-009	TMB substrate	10 ml (Ready to use)	4°C (Protect from light)
ARG82410-010	STOP solution	10 ml (Ready to use)	4°C
ARG82410-011	Plate sealer	4 strips	Room temperature

### Summary

Product Description	ARG82410 Mouse SERPINE2 ELISA Kit is an Enzyme Immunoassay kit for the quantification of Mouse SERPINE2 in serum, plasma (EDTA, heparin, citrate), cell culture supernatants and urine.
Tested Reactivity	Ms
Tested Application	ELISA
Target Name	SERPINE2
Conjugation	HRP
Conjugation Note	Substrate: TMB and read at 450 nm.
Sensitivity	0.39 ng/ml
Sample Type	Serum, plasma (EDTA, heparin, citrate), cell culture supernatants and urine.
Standard Range	0.78 - 50 ng/ml
Sample Volume	100 µl
Precision	Intra-Assay CV: 5.3% Inter-Assay CV: 6.5%

Alternate Names	Serpin E2; PN-1; PI-7; PN1; Protease nexin I; PNI; Protease nexin 1; GDNPF; Peptidase inhibitor 7; Glia-derived nexin; GDN; PI7
-----------------	---

## Application Instructions

Assay Time	~ 5 hours
------------	-----------

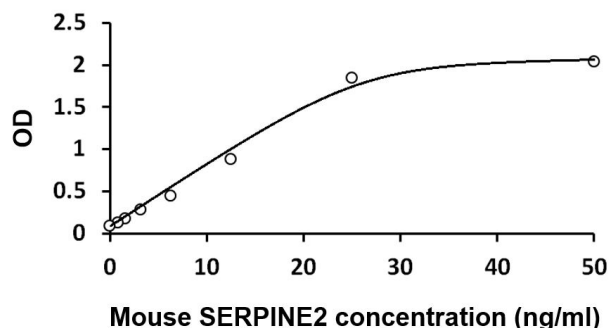
## Properties

Form	96 well
Storage instruction	Store the kit at 2-8°C. Keep microplate wells sealed in a dry bag with desiccants. Do not expose test reagents to heat, sun or strong light during storage and usage. Please refer to the product user manual for detail temperatures of the components.
Note	For laboratory research only, not for drug, diagnostic or other use.

## Bioinformation

Gene Symbol	SERPINE2
Gene Full Name	serpin peptidase inhibitor, clade E (nexin, plasminogen activator inhibitor type 1), member 2
Background	This gene encodes a member of the serpin family of proteins, a group of proteins that inhibit serine proteases. Thrombin, urokinase, plasmin and trypsin are among the proteases that this family member can inhibit. This gene is a susceptibility gene for chronic obstructive pulmonary disease and for emphysema. Alternative splicing results in multiple transcript variants. [provided by RefSeq, Aug 2012]
Function	Serine protease inhibitor with activity toward thrombin, trypsin, and urokinase. Promotes neurite extension by inhibiting thrombin. Binds heparin. [UniProt]
Highlight	Related products: <a href="#">Serpin antibodies</a> ; <a href="#">Serpin ELISA Kits</a> ; New ELISA data calculation tool: <a href="#">Simplify the ELISA analysis by GainData</a>
Cellular Localization	Secreted, extracellular space. [UniProt]

## Images



ARG82410 Mouse SERPINE2 ELISA Kit standard curve image

ARG82410 Mouse SERPINE2 ELISA Kit results of a typical standard run with optical density reading at 450 nm.