

## ARG82437 Human CNDP1 ELISA Kit

Package: 96 wells  
Store at: 4°C

### Component

Cat. No.	Component Name	Package	Temp
ARG82437-001	Antibody-coated microplate	8 X 12 strips	4°C. Unused strips should be sealed tightly in the air-tight pouch.
ARG82437-002	Standard	2 X 10 ng/vial	4°C
ARG82437-003	Standard/Sample diluent	30 ml (Ready to use)	4°C
ARG82437-004	Antibody conjugate concentrate (100X)	1 vial (100 µl)	4°C
ARG82437-005	Antibody diluent buffer	12 ml (Ready to use)	4°C
ARG82437-006	HRP-Streptavidin concentrate (100X)	1 vial (100 µl)	4°C
ARG82437-007	HRP-Streptavidin diluent buffer	12 ml (Ready to use)	4°C
ARG82437-008	25X Wash buffer	20 ml	4°C
ARG82437-009	TMB substrate	10 ml (Ready to use)	4°C (Protect from light)
ARG82437-010	STOP solution	10 ml (Ready to use)	4°C
ARG82437-011	Plate sealer	4 strips	Room temperature

### Summary

Product Description	ARG82437 Human CNDP1 ELISA Kit is an Enzyme Immunoassay kit for the quantification of Human CNDP1 in serum, plasma (EDTA, heparin) and cell culture supernatants.
Tested Reactivity	Hu
Tested Application	ELISA
Target Name	CNDP1
Conjugation	HRP
Conjugation Note	Substrate: TMB and read at 450 nm.
Sensitivity	156 pg/ml
Sample Type	Serum, plasma (EDTA, heparin) and cell culture supernatants.
Standard Range	312 - 20000 pg/ml
Sample Volume	100 µl
Precision	Intra-Assay CV: 5.7% Inter-Assay CV: 5.7%

Alternate Names Carnosine dipeptidase 1; EC 3.4.13.20; CNDP dipeptidase 1; CN1; CPGL2; Serum carnosinase; Beta-Ala-His dipeptidase; HsT2308; Glutamate carboxypeptidase-like protein 2

## Application Instructions

Assay Time ~ 5 hours

## Properties

Form 96 well

Storage instruction Store the kit at 2-8°C. Keep microplate wells sealed in a dry bag with desiccants. Do not expose test reagents to heat, sun or strong light during storage and usage. Please refer to the product user manual for detail temperatures of the components.

Note For laboratory research only, not for drug, diagnostic or other use.

## Bioinformation

Gene Symbol CNDP1

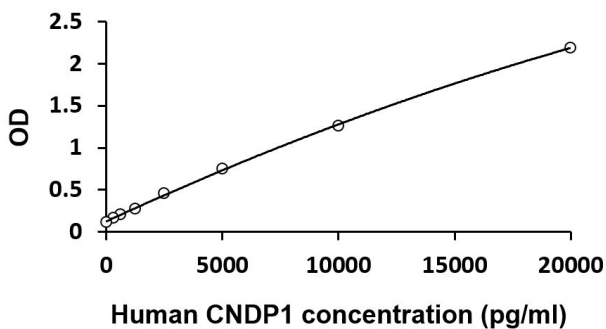
Gene Full Name carnosine dipeptidase 1 (metallopeptidase M20 family)

Background This gene encodes a member of the M20 metalloprotease family. The encoded protein is specifically expressed in the brain, is a homodimeric dipeptidase which was identified as human carnosinase. This gene contains trinucleotide (CTG) repeat length polymorphism in the coding region. [provided by RefSeq, Jul 2008]

Highlight Related products:  
[CNDP1 antibodies](#); [CNDP1 ELISA Kits](#);  
New ELISA data calculation tool:  
[Simplify the ELISA analysis by GainData](#)

Cellular Localization Secreted. [UniProt]

## Images



ARG82437 Human CNDP1 ELISA Kit standard curve image

ARG82437 Human CNDP1 ELISA Kit results of a typical standard run with optical density reading at 450 nm.