

## ARG82464 Human PSG1 ELISA Kit

Package: 96 wells  
Store at: 4°C

### Component

Cat. No.	Component Name	Package	Temp
ARG82464-001	Antibody-coated microplate	8 X 12 strips	4°C. Unused strips should be sealed tightly in the air-tight pouch.
ARG82464-002	Standard	2 X 100 ng/vial	4°C
ARG82464-003	Standard/Sample diluent	30 ml (Ready to use)	4°C
ARG82464-004	Antibody conjugate concentrate (100X)	1 vial (100 µl)	4°C
ARG82464-005	Antibody diluent buffer	12 ml (Ready to use)	4°C
ARG82464-006	HRP-Streptavidin concentrate (100X)	1 vial (100 µl)	4°C
ARG82464-007	HRP-Streptavidin diluent buffer	12 ml (Ready to use)	4°C
ARG82464-008	25X Wash buffer	20 ml	4°C
ARG82464-009	TMB substrate	10 ml (Ready to use)	4°C (Protect from light)
ARG82464-010	STOP solution	10 ml (Ready to use)	4°C
ARG82464-011	Plate sealer	4 strips	Room temperature

### Summary

Product Description	ARG82464 Human PSG1 ELISA Kit is an Enzyme Immunoassay kit for the quantification of Human PSG1 in serum, plasma (EDTA, heparin), cell culture supernatants and urine.
Tested Reactivity	Hu
Tested Application	ELISA
Target Name	PSG1
Conjugation	HRP
Conjugation Note	Substrate: TMB and read at 450 nm.
Sensitivity	0.78 ng/ml
Sample Type	Serum, plasma (EDTA, heparin), cell culture supernatants and urine.
Standard Range	1.56 - 100 ng/ml
Sample Volume	100 µl
Precision	Intra-Assay CV: 4.6% Inter-Assay CV: 5.8%

Alternate Names	PSGGA; PBG1; PSBG1; PSGIIA; DHFRP2; SP1; PSBG-1; PS-beta-C/D; CD66f; CD antigen CD66f; Fetal liver non-specific cross-reactive antigen 1/2; Pregnancy-specific beta-1-glycoprotein 1; B1G1; FL-NCA-1/2; Pregnancy-specific beta-1 glycoprotein C/D; PSG95; CD66 antigen-like family member F; Pregnancy-specific glycoprotein 1; PS-beta-G-1
-----------------	--

## Application Instructions

Assay Time	~ 5 hours
------------	-----------

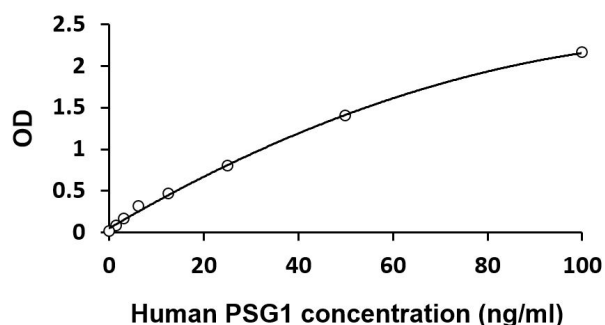
## Properties

Form	96 well
Storage instruction	Store the kit at 2-8°C. Keep microplate wells sealed in a dry bag with desiccants. Do not expose test reagents to heat, sun or strong light during storage and usage. Please refer to the product user manual for detail temperatures of the components.
Note	For laboratory research only, not for drug, diagnostic or other use.

## Bioinformation

Gene Symbol	PSG1
Gene Full Name	pregnancy specific beta-1-glycoprotein 1
Background	The human placenta is a multihormonal endocrine organ that produces hormones, enzymes, and other molecules that support fetal survival and development. Pregnancy-specific beta-1-glycoprotein (PSBG, PSG) is a major product of the syncytiotrophoblast, reaching concentrations of 100 to 290 mg/l at term in the serum of pregnant women (Horne et al., 1976 [PubMed 971765]). PSG is a member of the immunoglobulin (Ig) superfamily (Watanabe and Chou, 1988 [PubMed 3257488]; Streydio et al., 1988 [PubMed 3260773]).[supplied by OMIM, Oct 2009]
Highlight	Related products:  New ELISA data calculation tool: <a href="#">Simplify the ELISA analysis by GainData</a>
Cellular Localization	Secreted. [UniProt]

## Images



ARG82464 Human PSG1 ELISA Kit standard curve image

ARG82464 Human PSG1 ELISA Kit results of a typical standard run with optical density reading at 450 nm.