

ARG82498 Human PAM / PAL ELISA Kit

Package: 96 wells
Store at: 4°C

Component

Cat. No.	Component Name	Package	Temp
ARG82498-001	Antibody-coated microplate	8 X 12 strips	4°C. Unused strips should be sealed tightly in the air-tight pouch.
ARG82498-002	Standard	2 X 10 ng/vial	4°C
ARG82498-003	Standard/Sample diluent	30 ml (Ready to use)	4°C
ARG82498-004	Antibody conjugate concentrate (100X)	1 vial (100 µl)	4°C
ARG82498-005	Antibody diluent buffer	12 ml (Ready to use)	4°C
ARG82498-006	HRP-Streptavidin concentrate (100X)	1 vial (100 µl)	4°C
ARG82498-007	HRP-Streptavidin diluent buffer	12 ml (Ready to use)	4°C
ARG82498-008	25X Wash buffer	20 ml	4°C
ARG82498-009	TMB substrate	10 ml (Ready to use)	4°C (Protect from light)
ARG82498-010	STOP solution	10 ml (Ready to use)	4°C
ARG82498-011	Plate sealer	4 strips	Room temperature

Summary

Product Description	ARG82498 Human PAM / PAL ELISA Kit is an Enzyme Immunoassay kit for the quantification of Human PAM / PAL in serum, plasma (EDTA, heparin, citrate) and cell culture supernatants.
Tested Reactivity	Hu
Tested Application	ELISA
Target Name	PAM / PAL
Conjugation	HRP
Conjugation Note	Substrate: TMB and read at 450 nm.
Sensitivity	156 pg/ml
Sample Type	Serum, plasma (EDTA, heparin, citrate) and cell culture supernatants.
Standard Range	312 - 20000 pg/ml
Sample Volume	100 µl
Precision	Intra-Assay CV: 4.8% Inter-Assay CV: 6.7%

Alternate Names	Peptidylamidoglycolate lyase; PHM; EC 4.3.2.5; Peptidyl-glycine alpha-amidating monooxygenase; EC 1.14.17.3; PAL; PAM
-----------------	---

Application Instructions

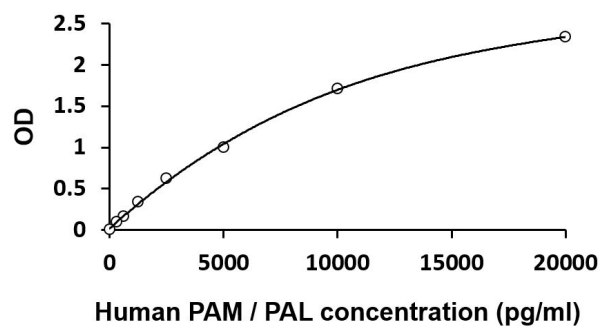
Assay Time	~ 5 hours
------------	-----------

Properties

Form	96 well
Storage instruction	Store the kit at 2-8°C. Keep microplate wells sealed in a dry bag with desiccants. Do not expose test reagents to heat, sun or strong light during storage and usage. Please refer to the product user manual for detail temperatures of the components.
Note	For laboratory research only, not for drug, diagnostic or other use.

Bioinformation

Gene Symbol	PAM
Gene Full Name	peptidylglycine alpha-amidating monooxygenase
Background	This gene encodes a multifunctional protein. It has two enzymatically active domains with catalytic activities - peptidylglycine alpha-hydroxylating monooxygenase (PHM) and peptidyl-alpha-hydroxyglycine alpha-amidating lyase (PAL). These catalytic domains work sequentially to catalyze neuroendocrine peptides to active alpha-amidated products. Multiple alternatively spliced transcript variants encoding different isoforms have been described for this gene but some of their full length sequences are not yet known. [provided by RefSeq, Jul 2008]
Function	Bifunctional enzyme that catalyzes 2 sequential steps in C-terminal alpha-amidation of peptides. The monooxygenase part produces an unstable peptidyl(2-hydroxyglycine) intermediate that is dismutated to glyoxylate and the corresponding desglycine peptide amide by the lyase part. C-terminal amidation of peptides such as neuropeptides is essential for full biological activity. [UniProt]
Highlight	Related products: PAM / PAL antibodies ; PAM / PAL ELISA Kits ; New ELISA data calculation tool: Simplify the ELISA analysis by GainData
Cellular Localization	Isoform 1: Membrane; Single-pass type I membrane protein. Isoform 2: Membrane; Single-pass type I membrane protein. Isoform 3: Secreted. Note=Secreted from secretory granules. Isoform 4: Secreted. Note=Secreted from secretory granules. [UniProt]



ARG82498 Human PAM / PAL ELISA Kit standard curve image

ARG82498 Human PAM / PAL ELISA Kit results of a typical standard run with optical density reading at 450 nm.