

ARG82586 Human LMAN2 / VIP36 ELISA Kit

Package: 96 wells
Store at: 4°C

Summary

Product Description	ARG82586 Human LMAN2 / VIP36 ELISA Kit is an Enzyme Immunoassay kit for the quantification of Human LMAN2 / VIP36 in serum, plasma and cell culture supernatants.
Tested Reactivity	Hu
Tested Application	ELISA
Specificity	This kit could assay both natural and recombinant Human LMAN2 / VIP36. No significant cross-reactivity or interference was observed in the following samples: Human: IFN gamma, IL1 beta, IL2, IL4, IL5, IL6, IL8, IL10, IL12, IL17A, IL18, IL21, IL22, IL23, MCP1, TGF beta 1, TNF alpha and VEGF. Mouse: GM-CSF, IFN gamma, IL1 beta, IL2, IL4, IL6, IL10, IL17A and TNF alpha. Rat: IFN gamma, IL1 beta, IL4, IL6, IL10 and TNF alpha.
Target Name	LMAN2 / VIP36
Conjugation	HRP
Conjugation Note	Substrate: TMB and read at 450 nm.
Sensitivity	62.5 pg/ml
Sample Type	Serum, plasma and cell culture supernatants.
Standard Range	125 - 8000 pg/ml
Sample Volume	100 µl
Precision	Intra-Assay CV: 6.0% Inter-Assay CV: 7.0%
Alternate Names	GP36B; C5orf8; Vesicular integral-membrane protein VIP36; Glycoprotein GP36b; VIP36; Lectin mannose-binding 2; Vesicular integral-membrane protein 36

Application Instructions

Assay Time	~ 2.5 hours
------------	-------------

Properties

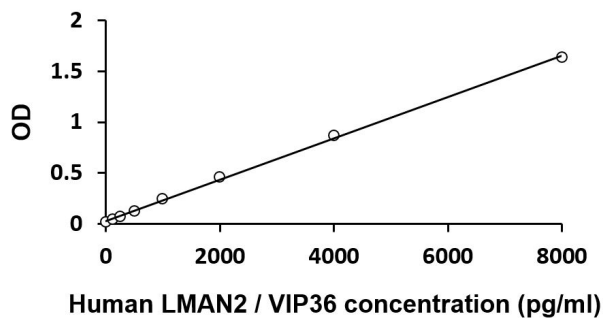
Form	96 well
Storage instruction	Store the kit at 2-8°C. Keep microplate wells sealed in a dry bag with desiccants. Do not expose test reagents to heat, sun or strong light during storage and usage. Please refer to the product user manual for detail temperatures of the components.
Note	For laboratory research only, not for drug, diagnostic or other use.

Bioinformation

Gene Symbol	LMAN2
-------------	-------

Gene Full Name	lectin, mannose-binding 2
Background	This gene encodes a type I transmembrane lectin that shuttles between the endoplasmic reticulum, the Golgi apparatus and the plasma membrane. The encoded protein binds high mannose type glycoproteins and may facilitate their sorting, trafficking and quality control. [provided by RefSeq, Oct 2008]
Function	Plays a role as an intracellular lectin in the early secretory pathway. Interacts with N-acetyl-D-galactosamine and high-mannose type glycans and may also bind to O-linked glycans. Involved in the transport and sorting of glycoproteins carrying high mannose-type glycans (By similarity). [UniProt]
Highlight	Related products: New ELISA data calculation tool: Simplify the ELISA analysis by GainData
Cellular Localization	Endoplasmic reticulum-Golgi intermediate compartment membrane; Single-pass type I membrane protein. Golgi apparatus membrane; Single-pass membrane protein. Endoplasmic reticulum membrane; Single-pass type I membrane protein. [UniProt]

Images



ARG82586 Human LMAN2 / VIP36 ELISA Kit standard curve image

ARG82586 Human LMAN2 / VIP36 ELISA Kit results of a typical standard run with optical density reading at 450 nm.