

## ARG82632 Mouse MMP9 Assay Kit

Package: 96 wells  
Store at: -20°C

### Summary

Product Description	ARG82632 Mouse MMP9 Assay Kit is a detection kit for the quantification of Mouse MMP9 in serum, plasma, cell culture supernatants, urine and tissue homogenates.
Tested Reactivity	Ms
Tested Application	FuncSt
Specificity	Measures endogenous active MMP9 (naturally occurring) or total active MMP9 (following activation with APMA).
Target Name	MMP9
Conjugation Note	Read at 405 nm.
Sensitivity	20 pg/ml for 1 hour incubation 1 pg/ml for 6 hours incubation
Detection Range	4 - 4000 pg/ml
Sample Type	Serum, plasma, cell culture supernatants, urine and tissue homogenates.
Sample Volume	100 µl
Alternate Names	Matrix metalloproteinase-9; 92 kDa gelatinase; MMP-9; Gelatinase B; GELB; CLG4B; MANDP2; EC 3.4.24.35; 92 kDa type IV collagenase

### Application Instructions

Assay Time	Overnight
------------	-----------

### Properties

Form	96 well
Storage instruction	Store the kit at -20°C. Keep microplate wells sealed in a dry bag with desiccants. Do not expose test reagents to heat, sun or strong light during storage and usage. Please refer to the product user manual for detail temperatures of the components.
Note	For laboratory research only, not for drug, diagnostic or other use.

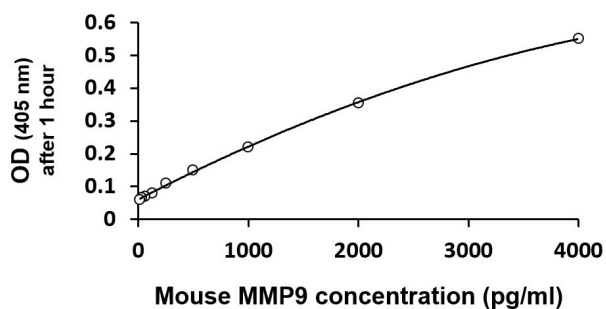
### Bioinformation

Gene Symbol	MMP9
Gene Full Name	matrix metalloproteinase 9
Background	Proteins of the matrix metalloproteinase (MMP) family are involved in the breakdown of extracellular matrix in normal physiological processes, such as embryonic development, reproduction, and tissue remodeling, as well as in disease processes, such as arthritis and metastasis. Most MMP's are secreted as inactive proproteins which are activated when cleaved by extracellular proteinases. The enzyme encoded by this gene degrades type IV and V collagens. Studies in rhesus monkeys suggest that the enzyme is involved in IL-8-induced mobilization of hematopoietic progenitor cells from bone marrow,

and murine studies suggest a role in tumor-associated tissue remodeling. [provided by RefSeq, Jul 2008]

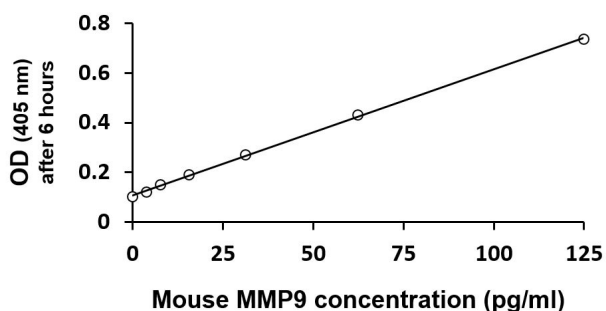
Function	May play an essential role in local proteolysis of the extracellular matrix and in leukocyte migration. Could play a role in bone osteoclastic resorption. Cleaves KiSS1 at a Gly- -Leu bond. Cleaves type IV and type V collagen into large C-terminal three quarter fragments and shorter N-terminal one quarter fragments. Degrades fibronectin but not laminin or Pz-peptide. [UniProt]
PTM	Processing of the precursor yields different active forms of 64, 67 and 82 kDa. Sequentially processing by MMP3 yields the 82 kDa matrix metalloproteinase-9.  N- and O-glycosylated. [UniProt]
Cellular Localization	Secreted, extracellular space, extracellular matrix. [UniProt]

## Images



ARG82632 Mouse MMP9 Assay Kit typical data demonstration image

ARG82632 Mouse MMP9 Assay Kit results of a typical data with optical density reading at 405 nm (after 1 hour incubation).



ARG82632 Mouse MMP9 Assay Kit typical data demonstration image

ARG82632 Mouse MMP9 Assay Kit results of a typical data with optical density reading at 405 nm (after 6 hours incubation).