

## ARG82695 Mouse CCL9 / MCP1 gamma ELISA Kit

Package: 96 wells  
Store at: 4°C

### Component

Cat. No.	Component Name	Package	Temp
ARG82695-001	Antibody-coated microplate	8 X 12 strips	4°C. Unused strips should be sealed tightly in the air-tight pouch.
ARG82695-002	Standard	2 X 10 ng/vial	4°C
ARG82695-003	Standard/Sample diluent	30 ml (Ready to use)	4°C
ARG82695-004	Antibody conjugate concentrate (100X)	1 vial (100 µl)	4°C
ARG82695-005	Antibody diluent buffer	12 ml (Ready to use)	4°C
ARG82695-006	HRP-Streptavidin concentrate (100X)	1 vial (100 µl)	4°C
ARG82695-007	HRP-Streptavidin diluent buffer	12 ml (Ready to use)	4°C
ARG82695-008	25X Wash buffer	20 ml	4°C
ARG82695-009	TMB substrate	10 ml (Ready to use)	4°C (Protect from light)
ARG82695-010	STOP solution	10 ml (Ready to use)	4°C
ARG82695-011	Plate sealer	4 strips	Room temperature

### Summary

Product Description	ARG82695 Mouse CCL9 / MCP1 gamma ELISA Kit is an Enzyme Immunoassay kit for the quantification of Mouse CCL9 / MCP1 gamma in serum, plasma (EDTA, heparin) and cell culture supernatants.
Tested Reactivity	Ms
Tested Application	ELISA
Target Name	CCL9 / MCP1 gamma
Conjugation	HRP
Conjugation Note	Substrate: TMB and read at 450 nm.
Sensitivity	3.9 pg/ml
Sample Type	Serum, plasma (EDTA, heparin) and cell culture supernatants.
Standard Range	7.8 - 500 pg/ml
Sample Volume	100 µl
Precision	Intra-Assay CV: 6.8% Inter-Assay CV: 7.3%

**Alternate Names** Scya10; MIP-1-gamma; Small-inducible cytokine A9; MRP-2; Macrophage inflammatory protein-related protein 2; Macrophage inflammatory protein 1-gamma; 30-101; Scya9; CCF18; C-C motif chemokine 9; 31-101; 29-101

## Application Instructions

**Assay Time** ~ 5 hours

## Properties

**Form** 96 well

**Storage instruction** Store the kit at 2-8°C. Keep microplate wells sealed in a dry bag with desiccants. Do not expose test reagents to heat, sun or strong light during storage and usage. Please refer to the product user manual for detail temperatures of the components.

**Note** For laboratory research only, not for drug, diagnostic or other use.

## Bioinformation

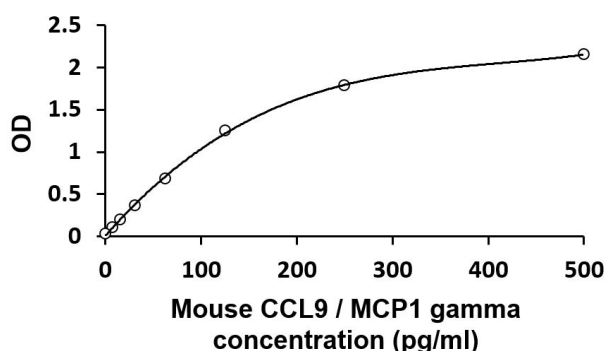
**Gene Symbol** Ccl9

**Gene Full Name** chemokine (C-C motif) ligand 9

**Function** Monokine with inflammatory, pyrogenic and chemokinetic properties. Circulates at high concentrations in the blood of healthy animals. Binding to a high-affinity receptor activates calcium release in neutrophils. It also inhibits colony formation of bone marrow myeloid immature progenitors. [UniProt]

**Highlight** Related products:  
[CCL9 antibodies](#); [CCL9 ELISA Kits](#);  
New ELISA data calculation tool:  
[Simplify the ELISA analysis by GainData](#)

## Images



ARG82695 Mouse CCL9 / MCP1 gamma ELISA Kit standard curve image

ARG82695 Mouse CCL9 / MCP1 gamma ELISA Kit results of a typical standard run with optical density reading at 450 nm.