

ARG82720 Human Serpin D1 / Heparin cofactor II ELISA Kit

Package: 96 wells
Store at: 4°C

Component

Cat. No.	Component Name	Package	Temp
ARG82720-001	Antibody-coated microplate	8 X 12 strips	4°C. Unused strips should be sealed tightly in the air-tight pouch.
ARG82720-002	Standard	2 X 50 ng/vial	4°C
ARG82720-003	Standard/Sample diluent	30 ml (Ready to use)	4°C
ARG82720-004	Antibody conjugate concentrate (100X)	1 vial (100 µl)	4°C
ARG82720-005	Antibody diluent buffer	12 ml (Ready to use)	4°C
ARG82720-006	HRP-Streptavidin concentrate (100X)	1 vial (100 µl)	4°C
ARG82720-007	HRP-Streptavidin diluent buffer	12 ml (Ready to use)	4°C
ARG82720-008	25X Wash buffer	20 ml	4°C
ARG82720-009	TMB substrate	10 ml (Ready to use)	4°C (Protect from light)
ARG82720-010	STOP solution	10 ml (Ready to use)	4°C
ARG82720-011	Plate sealer	4 strips	Room temperature

Summary

Product Description	ARG82720 Human Serpin D1 / Heparin cofactor II ELISA Kit is an Enzyme Immunoassay kit for the quantification of Human Serpin D1 / Heparin cofactor II in serum, plasma (EDTA, citrate), cell culture supernatants and urine.
Tested Reactivity	Hu
Tested Application	ELISA
Target Name	Serpin D1 / Heparin cofactor II
Conjugation	HRP
Conjugation Note	Substrate: TMB and read at 450 nm.
Sensitivity	0.39 ng/ml
Sample Type	Serum, plasma (EDTA, citrate), cell culture supernatants and urine.
Standard Range	0.78 - 50 ng/ml
Sample Volume	100 µl
Precision	Intra-Assay CV: 4.7%

Inter-Assay CV: 6.1%

Alternate Names

HC2; Protease inhibitor leuserpin-2; D22S673; HC-II; HCII; THPH10; Heparin cofactor 2; Heparin cofactor II; HCF2; LS2; HLS2; Serpin D1

Application Instructions

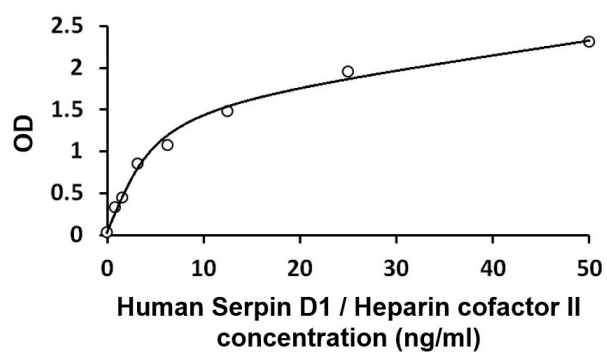
Assay Time ~ 5 hours

Properties

Form	96 well
Storage instruction	Store the kit at 2-8°C. Keep microplate wells sealed in a dry bag with desiccants. Do not expose test reagents to heat, sun or strong light during storage and usage. Please refer to the product user manual for detail temperatures of the components.
Note	For laboratory research only, not for drug, diagnostic or other use.

Bioinformation

Gene Symbol	SERPIND1
Gene Full Name	serpin peptidase inhibitor, clade D (heparin cofactor), member 1
Background	This gene belongs to the serpin gene superfamily. Serpins play roles in many processes including inflammation, blood clotting, and cancer metastasis. Members of this family have highly conserved secondary structures with a reactive center loop that interacts with the protease active site to inhibit protease activity. This gene encodes a plasma serine protease that functions as a thrombin and chymotrypsin inhibitor. The protein is activated by heparin, dermatan sulfate, and glycosaminoglycans. Allelic variations in this gene are associated with heparin cofactor II deficiency. [provided by RefSeq, Jul 2015]
Function	<p>Thrombin inhibitor activated by the glycosaminoglycans, heparin or dermatan sulfate. In the presence of the latter, HC-II becomes the predominant thrombin inhibitor in place of antithrombin III (AT-III). Also inhibits chymotrypsin, but in a glycosaminoglycan-independent manner.</p> <p>Peptides at the N-terminal of HC-II have chemotactic activity for both monocytes and neutrophils. [UniProt]</p>
Highlight	<p>Related products:</p> <p>Serpins antibodies; Serpins ELISA Kits;</p> <p>New ELISA data calculation tool:</p> <p>Simplify the ELISA analysis by GainData</p>
PTM	Phosphorylated by FAM20C in the extracellular medium. [UniProt]



ARG82720 Human Serpin D1 / Heparin cofactor II ELISA Kit standard curve image

ARG82720 Human Serpin D1 / Heparin cofactor II ELISA Kit results of a typical standard run with optical density reading at 450 nm.