

ARG82917 Mouse Prolactin ELISA Kit

Package: 96 wells
Store at: 4°C

Summary

Product Description	ARG82917 Mouse Prolactin ELISA Kit is an Enzyme Immunoassay kit for the quantification of Mouse Prolactin in Serum, plasma (heparin, citrate) and cell culture supernatants.
Tested Reactivity	Ms
Tested Application	ELISA
Specificity	There is no detectable cross-reactivity with other relevant proteins.
Target Name	Prolactin
Conjugation	HRP
Conjugation Note	Substrate: TMB and read at 450 nm.
Sensitivity	15 pg/ml
Detection Range	156 pg/ml - 10,000 pg/ml
Sample Type	Serum, plasma and cell culture supernatants
Precision	Intra-Assay CV: 4.6% Inter-Assay CV: 5.5%
Alternate Names	Prolactin; PRL

Application Instructions

Assay Time	~ 5 hours
------------	-----------

Properties

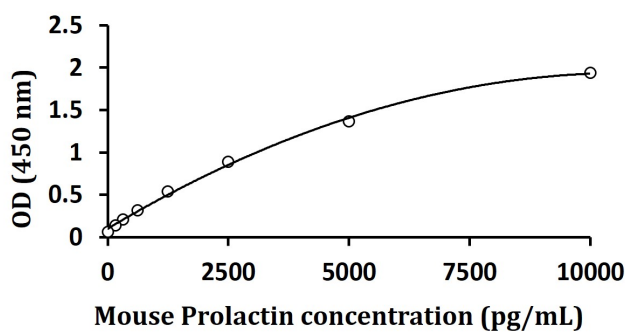
Form	96 well
Storage instruction	Store the kit at 2-8°C. Keep microplate wells sealed in a dry bag with desiccants. Do not expose test reagents to heat, sun or strong light during storage and usage. Please refer to the product user manual for detail temperatures of the components.
Note	For laboratory research only, not for drug, diagnostic or other use.

Bioinformation

Gene Symbol	PRL
Gene Full Name	prolactin
Background	Prolactin (PRL) is primarily secreted by pituitary gland. The hormone stimulates mammary gland development during pregnancy and lactation after childbirth. PRL has several variations with molecular weights ranged from 22kDa to 150kDa. PRL receptors are mainly located at mammary glands, but also found in other organs and tissues. PRL can bind to cytokine-like receptors and influence haematopoiesis, angiogenesis, and immuno-system. Anterior pituitary tumours can cause persistent elevation of PRL with clinical signs such as abnormal lactation, infertility and lack of menstrual flow in women, and incompetence in men.

Function	Prolactin acts primarily on the mammary gland by promoting lactation.
Research Area	Signaling Transduction antibody

Images



ARG82917 Mouse Prolactin ELISA Kit standard curve image

ARG82917 Mouse Prolactin ELISA Kit results of a typical standard run with optical density reading at 450 nm.