

## ARG83171 Monkey TSP1 / Thrombospondin 1 ELISA Kit

Package: 96 wells  
Store at: 4°C

### Summary

Product Description	ARG83171 TSP1 / Thrombospondin 1 ELISA Kit is an Enzyme Immunoassay kit for the quantification of TSP1 / Thrombospondin 1 in Serum, Plasma, Cell culture supernatants.
Tested Reactivity	Mk
Tested Application	ELISA
Specificity	There is no detectable cross-reactivity with other relevant proteins.
Target Name	TSP1 / Thrombospondin 1
Conjugation	HRP
Conjugation Note	Substrate: TMB and read at 450 nm.
Sensitivity	75 pg/ml
Detection Range	1.56 ng/ml - 100 ng/ml
Sample Type	Serum, Plasma, Cell culture supernatants
Precision	Intra-Assay CV: 5.1% Inter-Assay CV: 7.2%
Alternate Names	TSP1; THBS; THBS-1; Thrombospondin-1; TSP-1; TSP

### Application Instructions

Assay Time	~ 5 hours
------------	-----------

### Properties

Form	96 well
Storage instruction	Store the kit at 2-8°C. Keep microplate wells sealed in a dry bag with desiccants. Do not expose test reagents to heat, sun or strong light during storage and usage. Please refer to the product user manual for detail temperatures of the components.
Note	For laboratory research only, not for drug, diagnostic or other use.

### Bioinformation

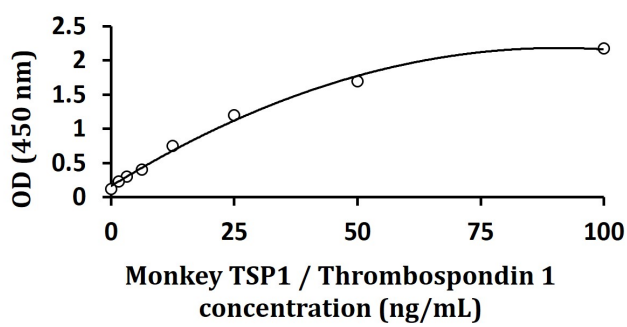
Gene Symbol	THBS1
Gene Full Name	thrombospondin 1
Background	The protein encoded by this gene is a subunit of a disulfide-linked homotrimeric protein. This protein is an adhesive glycoprotein that mediates cell-to-cell and cell-to-matrix interactions. This protein can bind to fibrinogen, fibronectin, laminin, type V collagen and integrins alpha-V/beta-1. This protein has been shown to play roles in platelet aggregation, angiogenesis, and tumorigenesis. [provided by RefSeq, Jul 2008]
Function	Adhesive glycoprotein that mediates cell-to-cell and cell-to-matrix interactions. Binds heparin. May play

a role in dentinogenesis and/or maintenance of dentin and dental pulp (By similarity). Ligand for CD36 mediating antiangiogenic properties. Plays a role in ER stress response, via its interaction with the activating transcription factor 6 alpha (ATF6) which produces adaptive ER stress response factors (By similarity). [UniProt]

Research Area

Cancer antibody; Cell Biology and Cellular Response antibody; Developmental Biology antibody; Metabolism antibody; Neuroscience antibody; Signaling Transduction antibody

Images



ARG83171 Monkey TSP1 / Thrombospondin 1 ELISA Kit standard curve image

ARG83171 Monkey TSP1 / Thrombospondin 1 ELISA Kit results of a typical standard run with optical density reading at 450 nm.