

## ARG83188 Monkey IGFBP7 ELISA Kit

Package: 96 wells  
Store at: 4°C

### Summary

Product Description	ARG83188 Monkey IGFBP7 ELISA Kit is an Enzyme Immunoassay kit for the quantification of Monkey IGFBP7 in Serum, Plasma, Urine and Cell culture supernatants.
Tested Reactivity	Mk
Tested Application	ELISA
Specificity	There is no detectable cross-reactivity with other relevant proteins.
Target Name	IGFBP7
Conjugation	HRP
Conjugation Note	Substrate: TMB and read at 450 nm.
Sensitivity	less than 350 pg/ml
Detection Range	625 pg/ml - 40,000 pg/ml
Sample Type	Serum, Plasma, Urine and Cell culture supernatants
Precision	Intra-Assay CV: 5.1% Inter-Assay CV: 6.8%
Alternate Names	AGM; RAMSVPS; IBP-7; PSF; IGFBP-7; FSTL2; Tumor-derived adhesion factor; Insulin-like growth factor-binding protein 7; IGFBRP1; TAF; MAC25; PGI2-stimulating factor; IGFBP-rP1; IGF-binding protein 7; IGFBP-7v; MAC25 protein; Prostacyclin-stimulating factor

### Application Instructions

Assay Time	~ 5 hours
------------	-----------

### Properties

Form	96 well
Storage instruction	Store the kit at 2-8°C. Keep microplate wells sealed in a dry bag with desiccants. Do not expose test reagents to heat, sun or strong light during storage and usage. Please refer to the product user manual for detail temperatures of the components.
Note	For laboratory research only, not for drug, diagnostic or other use.

### Bioinformation

Gene Symbol	IGFBP7
Gene Full Name	insulin-like growth factor binding protein 7
Background	This gene encodes a member of the insulin-like growth factor (IGF)-binding protein (IGFBP) family. IGFBPs bind IGFs with high affinity, and regulate IGF availability in body fluids and tissues and modulate IGF binding to its receptors. This protein binds IGF-I and IGF-II with relatively low affinity, and belongs to a subfamily of low-affinity IGFBPs. It also stimulates prostacyclin production and cell adhesion. Alternatively spliced transcript variants encoding different isoforms have been described for this gene,

and one variant has been associated with retinal arterial macroaneurysm (PMID:21835307). [provided by RefSeq, Dec 2011]

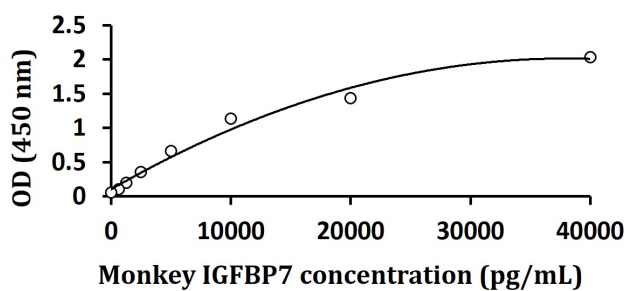
**Function** Binds IGF-I and IGF-II with a relatively low affinity. Stimulates prostacyclin (PGI2) production. Stimulates cell adhesion. [UniProt]

**Highlight** Related products:  
[IGFBP antibodies](#); [IGFBP ELISA Kits](#); [IGFBP Duos / Panels](#);  
New ELISA data calculation tool:  
[Simplify the ELISA analysis by GainData](#)

**PTM** N-glycosylated. [UniProt]

## Images

---



ARG83188 Monkey IGFBP7 ELISA Kit standard curve image

ARG83188 Monkey IGFBP7 ELISA Kit results of a typical standard run with optical density reading at 450 nm.

---