

ARG83214 Rabbit GREM2 ELISA Kit

Package: 96 wells
Store at: 4°C

Summary

Product Description	ARG83214 Rabbit GREM2 ELISA Kit is an Enzyme Immunoassay kit for the quantification of Rabbit GREM2 in Serum, Plasma and Cell culture supernatants.
Tested Reactivity	Rb
Tested Application	ELISA
Specificity	There is no detectable cross-reactivity with other relevant proteins.
Target Name	GREM2
Conjugation	HRP
Conjugation Note	Substrate: TMB and read at 450 nm.
Sensitivity	15 pg/ml
Detection Range	62.5 pg/ml - 4,000 pg/ml
Sample Type	Serum, Plasma and Cell culture supernatants
Precision	Intra-Assay CV: 4.5% Inter-Assay CV: 7.8%
Alternate Names	PRDC; Gremlin-2; DAND3; Protein related to DAN and cerberus; CKTSF1B2; DAN domain family member 3; Cysteine knot superfamily 1, BMP antagonist 2

Application Instructions

Assay Time	~ 5 hours
------------	-----------

Properties

Form	96 well
Storage instruction	Store the kit at 2-8°C. Keep microplate wells sealed in a dry bag with desiccants. Do not expose test reagents to heat, sun or strong light during storage and usage. Please refer to the product user manual for detail temperatures of the components.
Note	For laboratory research only, not for drug, diagnostic or other use.

Bioinformation

Gene Symbol	GREM2
Gene Full Name	gremlin 2, DAN family BMP antagonist
Background	This gene encodes a member of the BMP (bone morphogenic protein) antagonist family. Like BMPs, BMP antagonists contain cystine knots and typically form homo- and heterodimers. The CAN (cerberus and dan) subfamily of BMP antagonists, to which this gene belongs, is characterized by a C-terminal cystine knot with an eight-membered ring. The antagonistic effect of the secreted glycosylated protein encoded by this gene is likely due to its direct binding to BMP proteins. As an antagonist of BMP, this gene may play a role in regulating organogenesis, body patterning, and tissue differentiation. [provided

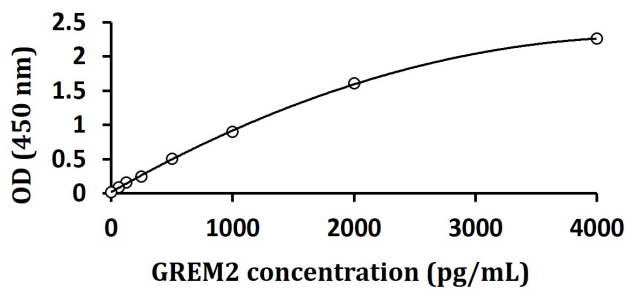
by RefSeq, Jul 2008]

Function Cytokine that inhibits the activity of BMP2 and BMP4 in a dose-dependent manner, and thereby modulates signaling by BMP family members. Contributes to the regulation of embryonic morphogenesis via BMP family members. Antagonizes BMP4-induced suppression of progesterone production in granulosa cells (By similarity). [UniProt]

Highlight Related products:
[GREM2 ELISA Kits:](#)
New ELISA data calculation tool:
[Simplify the ELISA analysis by GainData](#)

PTM N-glycosylated. [UniProt]

Images



ARG83214 Rabbit GREM2 ELISA Kit standard curve image

ARG83214 Rabbit GREM2 ELISA Kit results of a typical standard run with optical density reading at 450 nm.