

## ARG83343 Human PKLR ELISA Kit

Package: 96 wells  
Store at: 4°C

### Summary

Product Description	ARG83343 Human PKLR ELISA Kit is an Enzyme Immunoassay kit for the quantification of Human PKLR in serum, plasma and cell culture supernatants.
Tested Reactivity	Hu
Tested Application	ELISA
Specificity	There is no detectable cross-reactivity with other relevant proteins.
Target Name	PKLR
Conjugation	HRP
Conjugation Note	Substrate: TMB and read at 450 nm.
Sensitivity	45 pg/ml
Detection Range	93.7 pg/ml - 6000 pg/ml
Sample Type	Serum, Plasma and Cell culture supernatants.
Alternate Names	PKR; PKRL; PK1; Pyruvate kinase isozymes L/R; R-type/L-type pyruvate kinase; Pyruvate kinase PKLR; Pyruvate kinase 1; EC 2.7.1.40; RPK; Red cell/liver pyruvate kinase; PKL

### Application Instructions

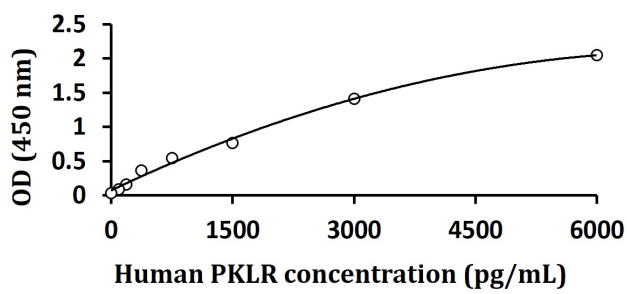
Assay Time	~ 5 hours
------------	-----------

### Properties

Form	96 well
Storage instruction	Store the kit at 2-8°C. Keep microplate wells sealed in a dry bag with desiccants. Do not expose test reagents to heat, sun or strong light during storage and usage. Please refer to the product user manual for detail temperatures of the components.
Note	For laboratory research only, not for drug, diagnostic or other use.

### Bioinformation

Gene Symbol	PKLR
Gene Full Name	pyruvate kinase, liver and RBC
Background	The protein encoded by this gene is a pyruvate kinase that catalyzes the transphosphorylation of phosphoenolpyruvate into pyruvate and ATP, which is the rate-limiting step of glycolysis. Defects in this enzyme, due to gene mutations or genetic variations, are the common cause of chronic hereditary nonspherocytic hemolytic anemia (CNSHA or HNSHA). Multiple transcript variants encoding different isoforms have been found for this gene. [provided by RefSeq, Jul 2008]
Function	Plays a key role in glycolysis. [UniProt]



ARG83343 Human PKLR ELISA Kit standard curve image

ARG83343 Human PKLR ELISA Kit results of a typical standard run with optical density reading at 450 nm.