

ARG83354 Human PDGF BB ELISA Kit

Package: 96 wells
Store at: 4°C, -20°C

Component

Cat. No.	Component Name	Package	Temp
ARG83354-01	Antibody Coated Microplate	8 X 12 strips	4°C
ARG83354-02	Standard	3 vials	4°C
ARG83354-03	100X Antibody Conjugate	120 µl	≤ -20°C
ARG83354-04	40X Streptavidin-HRP concentrate	300 µl	4°C
ARG83354-05	Standard/Sample Diluent buffer	30 ml	4°C
ARG83354-06	Antibody Diluent buffer	30 ml	4°C
ARG83354-07	10X Wash Buffer	50 ml	4°C
ARG83354-08	TMB substrate	12 ml	4°C (protect from light)
ARG83354-09	STOP solution	12 ml	4°C
ARG83354-10	Plate sealer	4 adhesive strips	Room temperature

Summary

Product Description	ARG83354 Human PDGF BB ELISA Kit is an Enzyme Immunoassay kit for the quantification of Human PDGF BB in serum, plasma and cell culture supernatants.
Tested Reactivity	Hu
Tested Application	ELISA
Specificity	No significant cross-reactivity or interference with Human PDGF R alpha
Target Name	PDGF BB
Conjugation	HRP
Conjugation Note	Substrate: TMB and read at 450 nm
Sensitivity	3.9 pg/ml
Sample Type	Serum, plasma and cell culture supernatants.
Standard Range	7.8 - 500 pg/mL
Sample Volume	50 µl
Precision	CV: less than 10%
Alternate Names	SIS; Becaplermin; Platelet-derived growth factor subunit B; IBGC5; PDGF subunit B; c-sis; SSV; PDGF-2; Proto-oncogene c-Sis; Platelet-derived growth factor beta polypeptide; PDGF2; Platelet-derived growth factor B chain

Application Instructions

Assay Time 4 hours

Properties

Form 96 well

Storage instruction Store the kit at 2-8°C. Keep microplate wells sealed in a dry bag with desiccants. Do not expose test reagents to heat, sun or strong light during storage and usage. Please refer to the product user manual for detail temperatures of the components.

Note For laboratory research only, not for drug, diagnostic or other use.

Bioinformation

Gene Symbol PDGFB

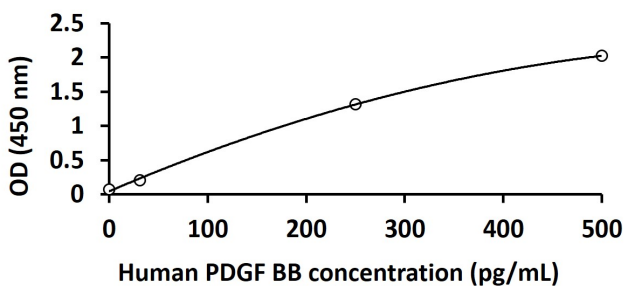
Gene Full Name platelet-derived growth factor beta polypeptide

Background The protein encoded by this gene is a member of the platelet-derived growth factor family. The four members of this family are mitogenic factors for cells of mesenchymal origin and are characterized by a motif of eight cysteines. This gene product can exist either as a homodimer (PDGF-BB) or as a heterodimer with the platelet-derived growth factor alpha polypeptide (PDGF-AB), where the dimers are connected by disulfide bonds. Mutations in this gene are associated with meningioma. Reciprocal translocations between chromosomes 22 and 7, at sites where this gene and that for COL1A1 are located, are associated with a particular type of skin tumor called dermatofibrosarcoma protuberans resulting from unregulated expression of growth factor. Two alternatively spliced transcript variants encoding different isoforms have been identified for this gene. [provided by RefSeq]

Function Growth factor that plays an essential role in the regulation of embryonic development, cell proliferation, cell migration, survival and chemotaxis. Potent mitogen for cells of mesenchymal origin. Required for normal proliferation and recruitment of pericytes and vascular smooth muscle cells in the central nervous system, skin, lung, heart and placenta. Required for normal blood vessel development, and for normal development of kidney glomeruli. Plays an important role in wound healing. Signaling is modulated by the formation of heterodimers with PDGFA (By similarity). [UniProt]

Highlight

Images



ARG83354 Human PDGF BB ELISA Kit standard curve image

ARG83354 Human PDGF BB ELISA Kit results of a typical standard run with optical density reading at 450 nm.