

ARG83466 Swine C Reactive Protein ELISA Kit

Package: 96 wells

Store at: 4°C

Summary

Product Description	ARG83466 Swine C Reactive Protein ELISA Kit is an Enzyme Immunoassay kit for the quantification of Swine C Reactive Protein in Serum, plasma and cell culture supernatants.
Tested Reactivity	Pig
Tested Application	ELISA
Target Name	C Reactive Protein
Conjugation	HRP
Conjugation Note	Substrate: TMB and read at 450 nm.
Sensitivity	40 pg/ml
Sample Type	Serum, plasma and cell culture supernatants.
Standard Range	78 - 5000 pg/ml
Sample Volume	100 µl
Alternate Names	1-205; PTX1; C-reactive protein

Application Instructions

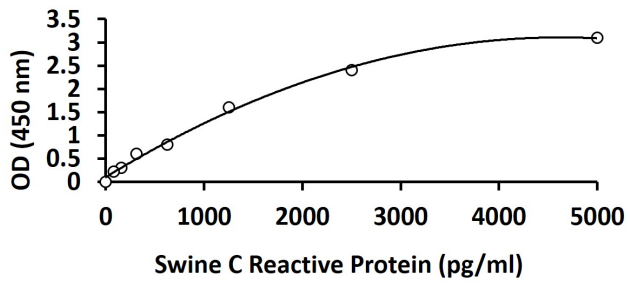
Assay Time	3.5 hours
------------	-----------

Properties

Form	96 well
Storage instruction	Store the kit at 4°C. Keep microplate wells sealed in a dry bag with desiccants. Do not expose test reagents to heat, sun or strong light during storage and usage. Please refer to the product user manual for detail temperatures of the components.
Note	For laboratory research only, not for drug, diagnostic or other use.

Bioinformation

Gene Symbol	CRP
Gene Full Name	C-reactive protein, pentraxin-related
Background	The protein encoded by this gene belongs to the pentaxin family. It is involved in several host defense related functions based on its ability to recognize foreign pathogens and damaged cells of the host and to initiate their elimination by interacting with humoral and cellular effector systems in the blood. Consequently, the level of this protein in plasma increases greatly during acute phase response to tissue injury, infection, or other inflammatory stimuli. [provided by RefSeq, Sep 2009]
Function	Displays several functions associated with host defense: it promotes agglutination, bacterial capsular swelling, phagocytosis and complement fixation through its calcium-dependent binding to phosphorylcholine. Can interact with DNA and histones and may scavenge nuclear material released from damaged circulating cells. [UniProt]



ARG83466 Swine C Reactive Protein ELISA Kit standard curve image

ARG83466 Swine C Reactive Protein ELISA Kit results of a typical standard run with optical density reading at 450 nm.