

ARG83519 arigoPLEX® Mouse Inflammatory Cytokine Multiplex ELISA Kit (IFN gamma, IL1 beta, IL6, IL17A, GM-CSF, TNF alpha, CXCL1, MCP1)

Package: 96 wells
Store at: 4°C, -20°C

Component

Cat. No.	Component Name	Package	Temp
ARG83519-01	Antibody Coated Microplate	8 X 12 strips	4°C
ARG83519-02	Standards Mixture	3 vials	4°C
ARG83519-03	10X Antibody Conjugate Mixture	1200 µl	≤ -20°C
ARG83519-04	40X HRP-Streptavidin solution	300 µl	4°C
ARG83519-05	Standard/Sample Diluent Buffer	30 ml	4°C
ARG83519-06	Antibody Diluent Buffer	35 ml	4°C
ARG83519-07	10X Wash Buffer	50 ml	4°C
ARG83519-08	TMB substrate	12 ml	4°C (protect from light)
ARG83519-09	STOP solution	12 ml	4°C
ARG83519-10	Plate sealer	3 strips	Room temperature

Summary

Product Description ARG83519 arigoPLEX® Mouse Inflammatory Cytokine Multiplex ELISA Kit (IFN gamma, IL1 beta, IL6, IL17A, GM-CSF, TNF alpha, CXCL1, MCP1) is an Enzyme Immunoassay kit for the quantification of IFN gamma, IL1 beta, IL6, IL17A, GM-CSF, TNF alpha, CXCL1, MCP1 and TNF alpha in Mouse serum, plasma and cell culture supernatants.

[See all Multiplex ELISA kits](#)

Tested Reactivity Ms

Tested Application ELISA

Target Name Inflammatory Cytokine

Conjugation HRP

Conjugation Note Substrate: TMB and read at 450 nm.

Sensitivity
 IFN gamma: 15.6 pg/ml
 IL1 beta: 15.6 pg/ml
 IL6: 31.25 pg/ml
 IL17A: 7.81 pg/ml
 GM-CSF: 7.81 pg/ml
 TNF alpha: 15.6 pg/ml
 CXCL1: 15.6 pg/ml
 MCP1: 3.9 pg/ml

Sample Type	Serum, plasma and cell culture supernatants.
Standard Range	IFN gamma: 31.25 - 1000 pg/ml IL1 beta: 31.25 - 1000 pg/ml IL6: 62.5 - 2000 pg/ml IL17A: 15.625 - 500 pg/ml GM - CSF: 15.625 - 500 pg/ml TNF alpha: 31.25 - 1000 pg/ml CXCL1: 31.25 - 1000 pg/ml MCP1: 7.8 - 250 pg/ml
Sample Volume	50 µl

Application Instructions

Assay Time	4.5 hours
------------	-----------

Properties

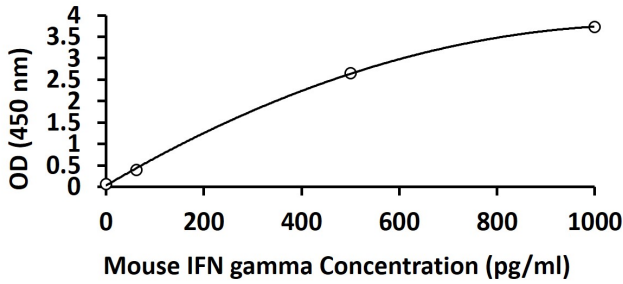
Form	96 well
Storage instruction	Store components at 4°C or -20°C. Keep microplate wells sealed in a dry bag with desiccants. Do not expose test reagents to heat, sun or strong light during storage and usage. Please refer to the product user manual for detail temperatures of the components.
Note	For laboratory research only, not for drug, diagnostic or other use.

Bioinformation

Gene Symbol	IFNG; IL1B; IL6; IL17A; CSF2; TNF; CXCL1; CCL2
Highlight	Related Product: IFN gamma antibodies; IL1 beta antibodies; IL6 antibodies; IL17 antibodies; GM CSF antibodies; TNF alpha antibodies; CXCL1 antibodies; MCP1 antibodies; New ELISA data calculation tool: Simplify the ELISA analysis by GainData

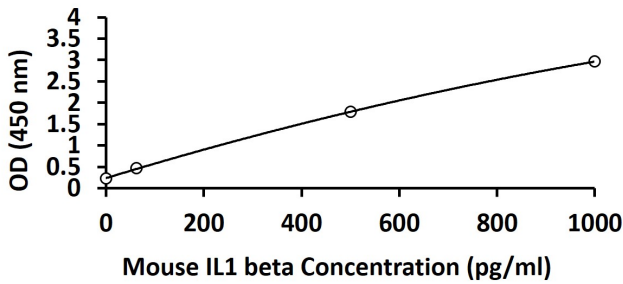
	1	2	3	4	5	6	7	8	9	10	11	12
A	IFN- γ	IFN- γ	IFN- γ	IFN- γ	IFN- γ	IFN- γ	IFN- γ	IFN- γ	IFN- γ	IFN- γ	IFN- γ	IFN- γ
B	IL-1 β	IL-1 β	IL-1 β	IL-1 β	IL-1 β	IL-1 β	IL-1 β	IL-1 β	IL-1 β	IL-1 β	IL-1 β	IL-1 β
C	IL-6	IL-6	IL-6	IL-6	IL-6	IL-6	IL-6	IL-6	IL-6	IL-6	IL-6	IL-6
D	IL-17	IL-17	IL-17	IL-17	IL-17	IL-17	IL-17	IL-17	IL-17	IL-17	IL-17	IL-17
E	GM-CSF	GM-CSF	GM-CSF	GM-CSF	GM-CSF	GM-CSF	GM-CSF	GM-CSF	GM-CSF	GM-CSF	GM-CSF	GM-CSF
F	TNF- α	TNF- α	TNF- α	TNF- α	TNF- α	TNF- α	TNF- α	TNF- α	TNF- α	TNF- α	TNF- α	TNF- α
G	CXCL1	CXCL1	CXCL1	CXCL1	CXCL1	CXCL1	CXCL1	CXCL1	CXCL1	CXCL1	CXCL1	CXCL1
H	MCP-1	MCP-1	MCP-1	MCP-1	MCP-1	MCP-1	MCP-1	MCP-1	MCP-1	MCP-1	MCP-1	MCP-1

Antibodies Coating Pattern In Microtiter Plate of arigoPLEX® Mouse Inflammatory Cytokine Multiplex ELISA Kit (IFN gamma, IL1 beta, IL6, IL17A, GM-CSF, TNF alpha, CXCL1, MCP1)



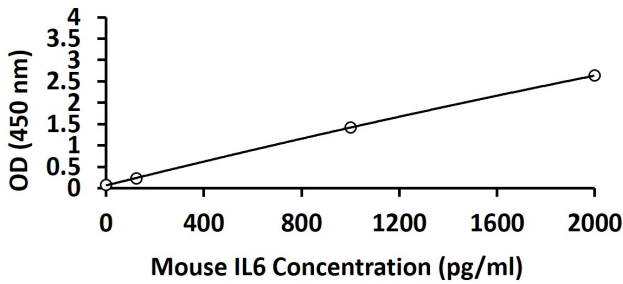
ARG83519 arigoPLEX® Mouse Inflammatory Cytokine Multiplex ELISA Kit (IFN gamma, IL1 beta, IL6, IL17A, GM-CSF, TNF alpha, CXCL1, MCP1) standard curve image

ARG83519 arigoPLEX® Mouse Inflammatory Cytokine Multiplex ELISA Kit (IFN gamma, IL1 beta, IL6, IL17A, GM-CSF, TNF alpha, CXCL1, MCP1) results of a typical standard for Mouse IFN gamma run with optical density reading at 450 nm.



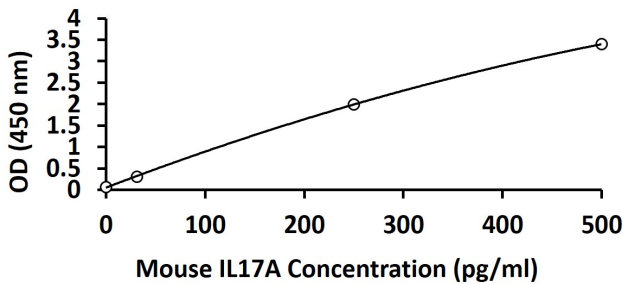
ARG83519 arigoPLEX® Mouse Inflammatory Cytokine Multiplex ELISA Kit (IFN gamma, IL1 beta, IL6, IL17A, GM-CSF, TNF alpha, CXCL1, MCP1) standard curve image

ARG83519 arigoPLEX® Mouse Inflammatory Cytokine Multiplex ELISA Kit (IFN gamma, IL1 beta, IL6, IL17A, GM-CSF, TNF alpha, CXCL1, MCP1) results of a typical standard for Mouse IL1 beta run with optical density reading at 450 nm.



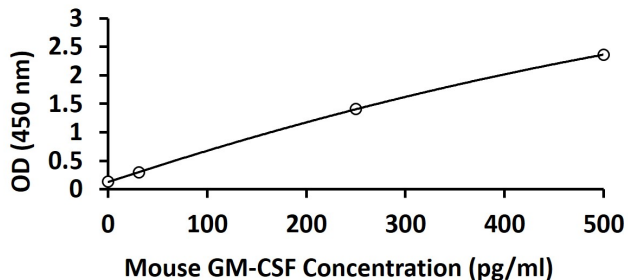
ARG83519 arigoPLEX® Mouse Inflammatory Cytokine Multiplex ELISA Kit (IFN gamma, IL1 beta, IL6, IL17A, GM-CSF, TNF alpha, CXCL1, MCP1) standard curve image

ARG83519 arigoPLEX® Mouse Inflammatory Cytokine Multiplex ELISA Kit (IFN gamma, IL1 beta, IL6, IL17A, GM-CSF, TNF alpha, CXCL1, MCP1) results of a typical standard for Mouse IL6 run with optical density reading at 450 nm.



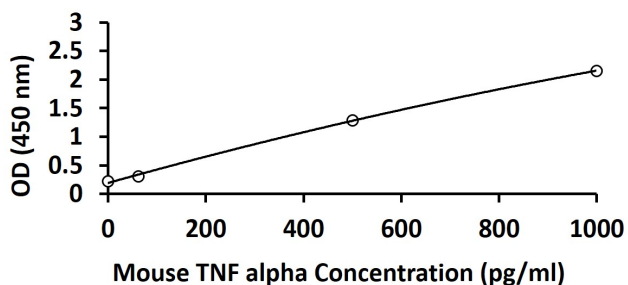
ARG83519 arigoPLEX® Mouse Inflammatory Cytokine Multiplex ELISA Kit (IFN gamma, IL1 beta, IL6, IL17A, GM-CSF, TNF alpha, CXCL1, MCP1) standard curve image

ARG83519 arigoPLEX® Mouse Inflammatory Cytokine Multiplex ELISA Kit (IFN gamma, IL1 beta, IL6, IL17A, GM-CSF, TNF alpha, CXCL1, MCP1) results of a typical standard for Mouse IL17A run with optical density reading at 450 nm.



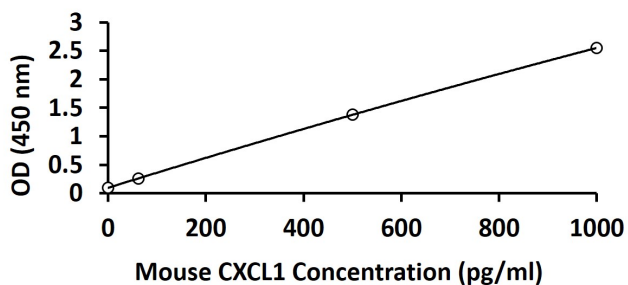
ARG83519 arigoPLEX® Mouse Inflammatory Cytokine Multiplex ELISA Kit (IFN gamma, IL1 beta, IL6, IL17A, GM-CSF, TNF alpha, CXCL1, MCP1) standard curve image

ARG83519 arigoPLEX® Mouse Inflammatory Cytokine Multiplex ELISA Kit (IFN gamma, IL1 beta, IL6, IL17A, GM-CSF, TNF alpha, CXCL1, MCP1) results of a typical standard for Mouse GM-CSF run with optical density reading at 450 nm.



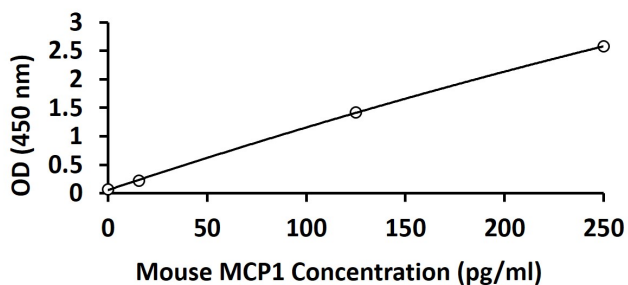
ARG83519 arigoPLEX® Mouse Inflammatory Cytokine Multiplex ELISA Kit (IFN gamma, IL1 beta, IL6, IL17A, GM-CSF, TNF alpha, CXCL1, MCP1) standard curve image

ARG83519 arigoPLEX® Mouse Inflammatory Cytokine Multiplex ELISA Kit (IFN gamma, IL1 beta, IL6, IL17A, GM-CSF, TNF alpha, CXCL1, MCP1) results of a typical standard for Mouse TNF alpha run with optical density reading at 450 nm.



ARG83519 arigoPLEX® Mouse Inflammatory Cytokine Multiplex ELISA Kit (IFN gamma, IL1 beta, IL6, IL17A, GM-CSF, TNF alpha, CXCL1, MCP1) standard curve image

ARG83519 arigoPLEX® Mouse Inflammatory Cytokine Multiplex ELISA Kit (IFN gamma, IL1 beta, IL6, IL17A, GM-CSF, TNF alpha, CXCL1, MCP1) results of a typical standard for Mouse CXCL1 run with optical density reading at 450 nm.



ARG83519 arigoPLEX® Mouse Inflammatory Cytokine Multiplex ELISA Kit (IFN gamma, IL1 beta, IL6, IL17A, GM-CSF, TNF alpha, CXCL1, MCP1) standard curve image

ARG83519 arigoPLEX® Mouse Inflammatory Cytokine Multiplex ELISA Kit (IFN gamma, IL1 beta, IL6, IL17A, GM-CSF, TNF alpha, CXCL1, MCP1) results of a typical standard for Mouse MCP1 run with optical density reading at 450 nm.