

## ARG83634 Human Siglec 5 + Siglec 14 ELISA kit

Package: 96 wells  
Store at: 4°C

### Component

Cat. No.	Component Name	Package	Temp
ARG83634-01	Antibody Coated Microplate	8 X 12 strips	4°C
ARG83634-02	Standard (Lyophilized)	3 vials	4°C
ARG83634-03	Standard diluent buffer	20 ml	4°C
ARG83634-04	Antibody conjugate concentrate	1 vials	4°C
ARG83634-05	Antibody diluent buffer	16 ml	4°C
ARG83634-06	HRP-Streptavidin concentrate	1 vials	4°C (protect from light)
ARG83634-07	HRP-Streptavidin diluent buffer	16 ml	4°C
ARG83634-08	20X Wash buffer	50 ml	4°C
ARG83634-09	TMB substrate	12 ml	4°C (protect from light)
ARG83634-10	STOP solution	12 ml	4°C
ARG83634-11	Plate sealer	4 strips	Room temperature

### Summary

Product Description	ARG83634 Human Siglec 5 + Siglec 14 ELISA kit for the quantification of Human Siglec 5 + Siglec 14 in serum, plasma (heparin), ascites, urine and cell culture supernatants.
Tested Reactivity	Hu
Tested Application	ELISA
Specificity	Not cross-reacts with: Siglec 3/Fc Chimera ; Siglec 7/Fc Chimera ; Siglec 9/Fc Chimera
Target Name	Siglec 5 + Siglec 14
Conjugation	HRP
Conjugation Note	Substrate: TMB and read at 450 nm.
Sensitivity	23.5 pg/ml
Sample Type	Serum, plasma (heparin), ascites, urine and cell culture supernatants.
Standard Range	46.9 - 3000 pg/ml
Sample Volume	100 µl

Precision	Intra-Assay CV: less than 10% Inter-Assay CV: less than 10%
Alternate Names	OB-BP2 ; SIGLEC-5 ; CD33L2 ; CD170 ; Sialic Acid-Binding Ig-Like Lectin 5 ; Obesity-Binding Protein 2 ; OB-Binding Protein 2 ; CD33 Antigen-Like 2 ; OBBP2 ; Sialic Ac ; d-Binding Immunoglobulin-Like Lectin 5 ; Sialic Acid Binding Ig-Like Lectin 5 ; CD170 Antigen ; Siglec-5 / Sialic Acid-Binding Ig-Like Lectin 14 ; Siglec-14

## Application Instructions

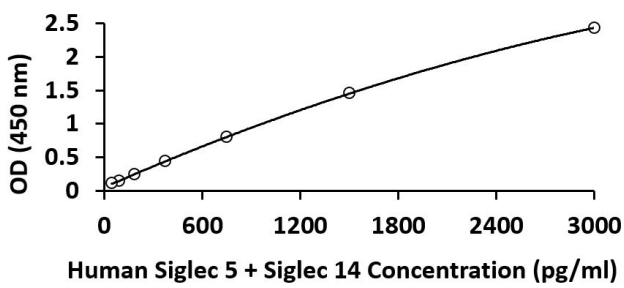
Assay Time	~ 4 hours
------------	-----------

## Properties

Form	96 well
Storage instruction	Store the kit at 2-8°C. Keep microplate wells sealed in a dry bag with desiccants. Do not expose test reagents to heat, sun or strong light during storage and usage. Please refer to the product user manual for detail temperatures of the components.
Note	For laboratory research only, not for drug, diagnostic or other use.

## Bioinformation

Gene Symbol	SIGLEC5 + SIGLEC14
Gene Full Name	Sialic Acid Binding Ig Like Lectin 5 + Sialic Acid Binding Ig Like Lectin 14
Background	<p>Siglec 5 encodes a member of the sialic acid-binding immunoglobulin-like lectin (Siglec) family. These cell surface lectins are characterized by structural motifs in the immunoglobulin (Ig)-like domains and sialic acid recognition sites in the first Ig V set domain. The encoded protein is a member of the CD33-related subset of Siglecs and inhibits the activation of several cell types including monocytes, macrophages and neutrophils. Binding of group B Streptococcus (GBS) to the encoded protein plays a role in GBS immune evasion. [provided by RefSeq, Feb 2012]</p> <p>Siglec 14 predicted to enable sialic acid binding activity. Predicted to be involved in cell adhesion. Predicted to be located in ficolin-1-rich granule membrane and tertiary granule membrane. Predicted to be active in plasma membrane. [provided by Alliance of Genome Resources, Dec 2024]</p>
Function	<p>Siglec 5: Putative adhesion molecule that mediates sialic-acid dependent binding to cells. Binds equally to alpha-2,3-linked and alpha-2,6-linked sialic acid. The sialic acid recognition site may be masked by cis interactions with sialic acids on the same cell surface. [UniProt]</p> <p>Siglec 14: Putative adhesion molecule. Sialic acid-binding paired receptor which may activate associated receptors. [UniProt]</p>
Highlight	<p>Related products: <a href="#">Siglec antibodies</a>; <a href="#">Siglec ELISA Kits</a>; <a href="#">Siglec Duos / Panels</a></p> <p>New ELISA data calculation tool: <a href="#">Simplify the ELISA analysis by GainData</a></p>
PTM	Disulfide bond, Glycoprotein [UniProt]
Cellular Localization	Membrane [UniProt]



ARG83634 Human Siglec 5 + Siglec 14 ELISA kit standard curve image

ARG83634 Human Siglec 5 + Siglec 14 ELISA kit results of a typical standard run with optical density reading at 450 nm.