

ARG83636 Human Tau phospho (Thr231) ELISA Kit

Package: 96 wells
Store at: 4°C, -20°C

Summary

Product Description	ARG83636 Human Tau phospho (Thr231) ELISA Kit is an Enzyme Immunoassay kit for the quantification of Human Tau phospho (Thr231) in CFS, serum and plasma.
Tested Reactivity	Hu
Tested Application	ELISA
Target Name	Tau
Conjugation	HRP
Conjugation Note	Substrate: TMB and read at 450 nm.
Sensitivity	7.8 pg/ml
Sample Type	CFS, serum and plasma.
Standard Range	15.625 - 1000 pg/ml
Sample Volume	50 µl
Alternate Names	TAU; Neurofibrillary tangle protein; Paired helical filament-tau; PPND; DDPAC; FTDP-17; MTBT2; Microtubule-associated protein tau; PHF-tau; MSTD; PPP1R103; MTBT1; MAPTL

Application Instructions

Assay Time	4 hours
------------	---------

Properties

Form	96 well
Storage instruction	Store the kit at 4°C, -20°C. Keep microplate wells sealed in a dry bag with desiccants. Do not expose test reagents to heat, sun or strong light during storage and usage. Please refer to the product user manual for detail temperatures of the components.
Note	For laboratory research only, not for drug, diagnostic or other use.

Bioinformation

Gene Symbol	MAPT
Gene Full Name	microtubule-associated protein tau
Background	This gene encodes the microtubule-associated protein tau (MAPT) whose transcript undergoes complex, regulated alternative splicing, giving rise to several mRNA species. MAPT transcripts are differentially expressed in the nervous system, depending on stage of neuronal maturation and neuron type. MAPT gene mutations have been associated with several neurodegenerative disorders such as Alzheimer's disease, Pick's disease, frontotemporal dementia, cortico-basal degeneration and progressive supranuclear palsy. [provided by RefSeq, Jul 2008]
Function	Promotes microtubule assembly and stability, and might be involved in the establishment and maintenance of neuronal polarity. The C-terminus binds axonal microtubules while the N-terminus

binds neural plasma membrane components, suggesting that tau functions as a linker protein between both. Axonal polarity is predetermined by TAU/MAPT localization (in the neuronal cell) in the domain of the cell body defined by the centrosome. The short isoforms allow plasticity of the cytoskeleton whereas the longer isoforms may preferentially play a role in its stabilization. [UniProt]

Highlight

Related products:

[Tau antibodies](#); [Tau ELISA Kits](#); [Tau Duos / Panels](#); [Anti-Rabbit IgG secondary antibodies](#);

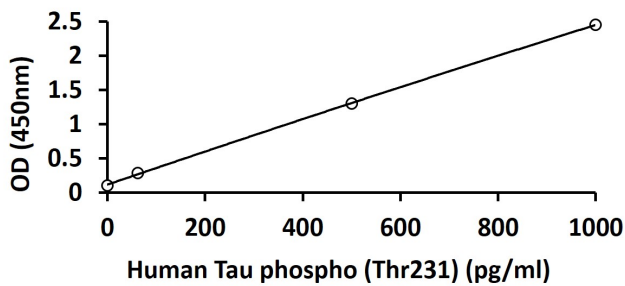
Related news:

["Pro-aging factor" tied to immune-related molecule](#)

Research Area

Neuroscience antibody; Signaling Transduction antibody; Neuron Development Study antibody

Images



ARG83636 Human Tau phospho (Thr231) ELISA Kit standard curve image

ARG83636 Human Tau phospho (Thr231) ELISA Kit results of a typical standard run with optical density reading at 450 nm.